

Historic Buildings/Structures Survey and Condition Assessment Associated with the Santa Fe Trail in Kansas



*Last Chance Store (ca. 1857)
Council Grove, Morris County, KS*

Report submitted to the
National Trails Intermountain Region, National Park Service; Santa Fe, NM



Rick Anderson
National Register Historian
Cultural Resources Division
Kansas Historical Society
Topeka, KS
December 2017

Abstract:

The scope of this project was to document all extant buildings dating from 1821 - 1872 that are associated with the Santa Fe National Trail in Kansas. Those buildings and structures within a ¼-mile corridor on each side of the designated National Historic Trail were to be surveyed. In August 2017 following a meeting and discussions with NPS personnel, the survey corridor along each side of the trail was increased to ½ mile and a later cutoff date of 1878 was established. This report summarizes the methodology used during the Kansas - Santa Fe Trail Building survey project. The report also looks at the project's total numbers of buildings (70) comparatively by county regarding the buildings' architectural styles, plan forms, number of stories, construction materials, historic functions and current functions [See Appendix "A"]. Within the report, recommendations have been provided for nine of the buildings requiring the most urgent preservation attention [see Recommendations]. All condition assessments, research and photographs are accessible on the Kansas Historic Resources Inventory database accessible at: www.khri.kansasgis.org/. This survey report also includes an Appendix "B" of the 70 buildings identified.

Table of Contents:

Introduction	2-4
Methodology	4-6
Outcome of the Project	6-8
Assessment of the Resource Numbers by County	8-12
Recommendations	12-32
Appendix "A" – Building Resources by County	33-35
Appendix "B" – Resources by County; Photographs and Details ¹	35-53
Appendix "C" – Thomas W. Mitchell House Research and Details	54-65
Appendix "D" – Photograph log	66-69

Introduction:

Types and numbers of Santa Fe Trail-related buildings along the trail: The varying terrain from the river valleys and hills in the northeast part of the state to the prairies of central and southern Kansas, combined with the availability of natural materials, dictated to the types and numbers of Santa Fe Trail related buildings in Kansas. Overall the four most often used materials used in construction of the buildings surveyed were brick, wood, limestone, and sandstone. The greatest concentration of buildings along the Santa Fe Trail in Kansas are located in the area of Council Grove in Morris County.

Travel by wagons and caravans was found to be difficult at times while crossing the numerous small creeks, tributaries, and river valleys from the northeast into central Kansas. In time there came to be a realized advantage resulting from the growth of trees near those tributaries. The presence of natural and continuous sources of water prompted the growth of an abundance of old and very large

¹ For more information on buildings in Appendix "B"; see the condition assessment sheets in the KHRI database.

trees along the streams and rivers. Especially during the territorial days of Kansas and during the Santa Fe Trail era, trees were milled primarily for use in the construction of buildings along the trail. Farther southwest in Kansas the terrain of the land turned to prairie having fewer sources of water. Less water meant less trees for construction. Therefore, wood as a building material was sparse on the prairie. Wood had to be brought in for the erection of wood-frame buildings. This would be the case of the now few remaining wood-framed buildings at Fort Dodge in Ford County, Kansas. Other natural resources of limestone and sandstone (although fewer buildings were constructed of sandstone) were used in the construction of buildings. Limestone and eventually sandstone was readily available when wood was difficult to come by in central Kansas from Council Grove in eastern Morris County and southwest along the trail. Note: along with the wood-frame and brick buildings in northeast Kansas, there are also limestone buildings.

Vegetation and Soils: ²

Mid-latitude deciduous forest, including oak (*Quercus* spp.), elm (*Ulmus* spp.), ash (*Fraxinus* spp.), birch (*Betula* spp.) and beech (*Fagus* spp.), is common along the eastern part of the trail, particularly in the valleys along the rivers and streams which irrigate the region. This type of vegetation was dominated by tall, broadleaf trees that provide a continuous and dense canopy in summer but shed their leaves in winter. The soils associated with mid-latitude deciduous forests are highly productive as many settlers in the vicinity of the trail discovered. Outside the river valleys and further westward, the trail was dominated by tall-grass prairie. Trees and shrubs were absent in the natural vegetation of the region while the grasses were deeply rooted and dense. Soils of the tall-grass prairie are among the most fertile soils in the world. As one moves westward, the tall-grass prairie grades into short-grass prairie or steppe. This natural vegetation type consisted of sparsely distributed short grasses interspersed with areas of bare soil, scattered shrubs, and low trees. The change from steppe vegetation to semi-desert shrub is again a transitional one with the absence of vegetation becoming more apparent. This type of vegetation is composed of xerophytic shrubs, of which sagebrush (*Artemisia* spp.) is an example.

The uses, locations, and availability of the construction materials also determined the buildings' physical characteristics. ³ The one commonality of construction of these on-the-trail resources is the use of locally available materials, such as oak, walnut cottonwood and stone. Near the trail termini or other significant towns, more permanent construction techniques were used to erect buildings and structures. These building resources were constructed of brick (e.g., Shawnee Methodist Mission buildings, Fairway [Kansas City], Kansas; Grinter Place, Bonner Springs, Kansas; and several single-family dwellings in Council Grove), limestone (e.g., Last Chance Store and the Kaw Mission, Council Grove, Kansas to name just a few), sandstone (e.g., several of the buildings at Fort Larned were constructed of sandstone, available in that area), adobe (e.g., several buildings had been constructed of adobe at Fort Dodge, Kansas. Visible extant adobe buildings are not present although small amounts of adobe have been

² Kansas Historical Society, Historic Resources of the Santa Fe Trail Multiple Property Documentation Form (Revised). August 2012, G138. Citation covers paragraph.

³ Ibid. As outlined in the Historic Resources of the Santa Fe Trail revised multiple property nomination.

found within the interior walls of some of the older buildings) and wood (e.g., Fort Dodge Junior Officers' Quarters, Fort Dodge, Kansas.) Though some wooden buildings remain that date to the Santa Fe Trail era, many have been remodeled to the point that only a small portion of original material remains (e.g., Hays House Restaurant and the Dr. James H. Bradford House in Council Grove, Kansas).

Most often located near a water source, buildings and structures along the middle of the trail route frequently were built of wood and sod, but they were often more simply constructed as dugouts built into hill slopes, walled with sod or adobe, and roofed with logs covered with dirt. As a result of the impermanence of materials and the disuse of the trail itself, most of these resources are no longer extant or are in ruinous form (McGee-Harris Stage Station, Burlingame vicinity, Kansas). No longer extant, Boyd's Ranch in Larned, Kansas was built of sod, as were most of its outbuildings, including a corral.

Found along the trail, stage stations were complexes that provided exchange points for draft animals; thus, they featured corrals and stock shelters, and a single or small set of buildings to house the station keeper and relay drivers and to provide shelter for storage of stock forage and equipment. Some of the more important stage stations (Six Mile Creek Stage Station, Burdick vicinity, Morris Co. Kansas) featured developed wells and blacksmith shops.

The actual numbers of extant buildings associated with the Santa Fe Trail had never been formally surveyed, assessed or recorded up until this project began in the late fall of 2016. An earlier literature search in 2015 conducted by the Kansas Historical Society in conjunction with the National Park Service identified approximately 55 properties that included properties on the main routes and on secondary and tertiary routes. This project focused on only those buildings associated with the congressionally designated Santa Fe National Historic Trail. ⁴

Methodology:

First, in determining whether the identified resources were to be labeled as structures or buildings, the definitions established by the National Park Service for each were used. ⁵ The National Register Bulletin 16A – "How to Complete the National Register Registration Form" publication defines buildings: "... such as a house, barn, church, hotel, or similar construction, is created principally to shelter any form of human activity. 'Building' may also be used to refer to a historically and functionally related unit, such as a courthouse and jail or a house and a barn..." Regarding structures: "The term 'structure' is used to distinguish from buildings those functional constructions made usually for purposes other than creating human shelter...examples of structures include: aircraft, apiary, automobile, bandstand, boats and ships bridge, cairn, canal..."

As a basis to follow for beginning the survey assessments, reference was made to the initial 2015 Santa Fe Trail Buildings Literature search. Determination was necessary to distinguish those

⁴ References to the Santa Fe Trail in this document refer to the Santa Fe National Historic Trail.

⁵ Refer to NPS Bulletin 16A: How to Complete the National Register Registration Form at: <https://www.nps.gov/nr/publications/bulletins/nrb16a/>

properties located on or near the trail for which site visits would be scheduled. Prior to site visits, phone calls were made to members of the Santa Fe Trail Association and the Santa Fe Trail museum at Larned. George Elmore, Administration Officer at Fort Larned was contacted for information and history regarding the Fort Larned buildings. After contacting Dave Smith, Superintendent of the Kansas Soldiers Home at Fort Dodge for permission to survey the buildings owned by the State of Kansas Veterans Administration, Joshua Bemiss, Fort Dodge Physical Plant Supervisor, opened the surveyed buildings for interior access. (Interior access was not given to the Fort Dodge – Commanding Officer’s Quarters as that is a private residence.)

A list was then determined and developed of those properties that had been previously surveyed and also from those previously submitted to the Kansas Historical Resources Inventory database. www.kshs.org/khri [Referred to as KHRI.] From that list plans for site visit were created to survey each county in Kansas having buildings associated with the Santa Fe Trail. The counties that have SFT-related buildings are: Wyandotte, Johnson, Douglas, Osage, Morris, Pawnee, and Ford. The author also contacted each county’s register of deeds or county appraiser offices to verify, if possible, the current owners of the properties. Note: the list of counties and buildings is not an exhaustive list.

In the field, GPS readings were recorded while standing in front of the buildings (just outside the primary entrances) with a handheld Garmin eTrex® with TOPO map capability. Recordings were taken in WGS-84 as required by the NPS. (WGS-84 readings would be converted to UTM’s for uploading to the KHRI.) Whenever possible the surveyor cleared it with the building’s owners or with their neighbors regarding what was being done in the area. Generally, the surveyor received positive responses. Photographs were taken in RAW format with either a Sony Alpha a600 or a Canon EOS SL1 cameras. Several exterior photos were taken of all the building’s elevations to include anything that stood out about the building. Exterior photos also concentrated on anything that would be noted in the condition assessments. If the owners were home and they agreed, interior photos were taken. (Note: for matters of privacy, interior photos are not posted to KHRI of private residences.) When finished and time allowed the author also visited local historical societies and libraries to conduct research and to visit with the local citizens.

Working from the office, the GPS readings and any other pertinent information were recorded to temporary KHRI, condition assessment, and site plan templates. After conducting further research and searching for maps and historic photos the templates were edited before finalizing the uploads. The distance of each building from the Santa Fe Trail corridor was verified using the NPS Arc-GIS website.⁶ GPS readings were compared with Google Maps (<https://www.google.com/maps>) as a backup verification. Whenever the need to verify swales near a site arose, Light Detection and Ranging (LiDAR) software was accessed through the KSHS-DASC server. LiDAR images show the surface of the land without trees and other vegetation. This allows the users to see even slight variations in the surface such as swales or old roads that had been obscured by vegetation.

⁶ The ArcGIS site is a public website, but a public account must be established in order to access the maps.

The RAW format photographs were edited and converted to JPEGs (JPEG format is required by the KHRI database for uploading). Completed photologs, site plans, condition assessments were all converted to PDF's. Finally, all photographs, forms and research documents were uploaded to the KHRI database at: www.kshs.org/khri

Following discussion during an August 2017 meeting with NPS personnel in Larned, KS, consensus was reached to update the distance extending out from the trail from ¼ to ½ miles; thus, creating an overall one-mile trail corridor. The cut-off date of construction was updated from 1872 to 1878. The new date of 1878 would encompass later trail activity and construction in Pawnee and Ford Co.'s.

Association and Location of the Surveyed Buildings Relative to the Santa Fe Trail:

Direct Association (DIR): Determinations were made as to whether buildings had known direct connections to the Santa Fe Trail. For this survey those buildings with known connections are termed as having "direct association" (DIR) and are located within the one-mile corridor of the trail. For example, the Last Chance Store at Council Grove (KHRI #127-1180-00004) was located on and directly associated with the trail. These resources were constructed to support trail use (e.g., stage stations, corrals, warehouses; others built or occupied by people directly associated with the trail (e.g., traders houses).

Indirect Association (IND): Buildings outside the one-mile corridor were surveyed and recorded due to their having an architectural style, history, and significance relating to the Santa Fe Trail. Those buildings outside the one-mile corridor will be noted as having "Indirect Association" (IND). These buildings were not constructed because of the trade but rather became associated with the Santa Fe Trail due to their proximity of the trail. ⁷

Outcome of the Project: ⁸

A total of 70 buildings were identified during the survey. Fifty-five of those buildings have direct (DIR) associations with the Santa Fe Trail and are located on or within a ½-mile trail corridor. The remaining 15 buildings were identified as having indirect (IND) association with the trail. These buildings located outside the ½-mile trail corridor were surveyed and assessed due to their architectural styles, history, and their significance to the area in which they are located. ⁹ There were no Santa Fe Trail related structures identified during this survey project.

Indirect Association Buildings (IND): In the cases of the Hillcrest House (KHRI #145-135) and Barn (KHRI #145-136) in Larned, the owner, Captain C. A. Morse built the house and barn while he was stationed at Fort Larned just five miles away. Both buildings are located central (.80 and .71 miles)

⁷ For more information relating to direct and indirect associations of SFT buildings see: Historic Resources of the Santa Fe Trail (Amended 2013). Thematic Nomination and Multiple Property Documentation. Section number F; page 125-126.

⁸ Refer to 'Appendix "A" – Building Resources by County' for more information.

⁹ See "Methodology" for more information about building associations.

between two branches of the Santa Fe Trail. The Hillcrest House mimics the architectural style of Fort Larned's Commanding Officer's Quarters (KHRI #145-124). While standing at Fort Larned looking east towards the city of Larned on a hill, consideration was made that the Hillcrest House and Barn could have been seen from the fort prior to there being so many trees on the hill in Larned as there are today.

Although Grinter Place (KHRI #209-2820-00091) is located 8.0 miles north of the formal Santa Fe Trail route in Wyandotte, Co. Kansas, Moses Grinter's house and his ferry crossing of the Kansas River is worthy of mentioning. From the late-1820s through the 1860s, the Kansas River crossing near Grinter Place was important to the military as it transported soldiers, supplies and ammunition between the forts and Santa Fe. Grinter's Place would also become important by offering shelter, supplies and assistance to wagons traversing the crossing to travel on to Santa Fe, New Mexico. The wagon routes taken to and from Grinter Place would now be considered as branch routes thus the "Indirect Association" building notation in the survey. Grinter Place was listed in the National Register of Historic Places on January 25, 1971. See nomination for more information.

Four properties located in the former proposed town site of Prairie City, Kansas Territory [near present day Baldwin City, Douglas Co. Kansas] were surveyed and accessed due to the original builders/owners' anticipation that the Santa Fe Trail would eventually pass through their town. The 1856 Prairie City, Douglas Co. Kansas Plat Map shows the proposed main street was to have been named Broadway with the following notation: "Santa Fe Road from Kansas City to Santa Fe 775 Miles." In reality the site of Prairie City was actually located approximately two miles south of the designated trail. Only a few plots were ever purchased. The town did not thrive as hoped partly due to the town being located just a short 1-½ miles from Baldwin City. The local, short-lived Prairie City newspaper, the *Freemen's Champion*, advertised the new city as:

... situated on the new Santa Fe road, forty-five miles west of Kansas City, and fifteen miles south of Lawrence. The commerce of New Mexico will soon be carried through this town, in wagons, each drawn by five or six pair of oxen or mules, carrying from four to six thousand pounds, and in trains of from ten to fifty wagons; making the distance of nine hundred miles in drives of from ten to twenty miles each day. Passing the town are roads running from Lawrence to Osawatomie, Peoria to Paola, Ohio City, Stanton, and all points in the Neosho and Pottawatomie country, which have immense travel... ¹⁰

Land speculators and the local news media failed to entice sufficient numbers of investors to construct Prairie City. By the early 1860's only a few people continued to build in the area. This is part of the reason why the four Prairie City properties were surveyed and assessed. Those properties are: Prairie City Catholic Mission [Ruins] (KHRI #045-0000-00362); Prairie City Pastoral Residence [Ruins] (KHRI #045-0000-00003); George Meunier (Miller) House (KHRI #045-0000-00365) and the George Meunier (Miller) Barn (KHRI #045-6073).

¹⁰ *Freemen's Champion*. (Prairie City, Kansas Territory) 02 September 1858 p. 4.

The other ten indirectly associated buildings were surveyed and assessed for their architectural styles compared to those located on/near the trail. (Consideration was also made for the history of the other indirectly associated building properties' relevance to the trail similarly as that of Grinter Place.)

Additional Possibilities: Two additional sites may also offer resources that are associated with the Kansas – Santa Fe Trail Buildings Survey project. Local Council Grove historians in Morris County have mentioned a property west of Council Grove known locally as the Stone Corral. The stone corral and fences are constructed of stacked limestone. The ruins of a barn and a nearby house with a cellar are located on the Santa Fe Trail. The original land patent was verified and compared with the information shared by the local people in Council Grove. Cupid Rogers was granted homestead rights on October 1, 1877 by the 1862 Homestead Act. LiDAR imagery shows in great detail the Santa Fe Trail swales leading to the area of the stone corral, barn ruins, and the limestone fences. Swales east of the corral have previously been recorded and marked with signage. Sergeant Cupid Rogers served in the Arkansas Company C of the 54th U. S. Colored Infantry. Rogers is buried in the Riverside Cemetery in Denver, Colorado. Although a few newspaper articles were reviewed, a more thorough search would entail looking at newspapers on the microfilm rolls and also conducting further research in the Morris County Historical Society and the Santa Fe Trail Museum at Larned.

Another extant building outside the ½-mile corridor survey, the Shore & Mewhinney Barn [KHRI #045-0000-00380] related to the Shore & Mewhinney Store Building ca. 1857 (Demolished) [KHRI #045-0000-00379] would require further research. The Shore & Mewhinney store and barn were once part of the non-extant Prairie City area. In 2017 the barn was located while searching for the store building's ruins. More research is required of the site and the owners of the barn should be contacted so better photos could be taken.

Assessment of the building resources numbers by county:

The data groups shown below reflect just a small sample of what project number queries can provide. The Kansas Historic Resources Inventory Database (KHRI) can be queried by date of construction, location by county/town/area, etc. to develop numerous scenarios of the survey results. Refer to: www.kshs.org/khri

<u>By county:</u>	<u>Totals:</u>	<u>Indirect Association:</u>	<u>Direct Association:</u>
Wyandotte:	1	1	0
Johnson:	9	2	7
Douglas:	11	8	3
Osage:	6	2	4
Morris:	23	0	23
Pawnee:	13	2	11
Ford	<u>7</u>	<u>0</u>	<u>7</u>
Totals:	70	15	55

Types of buildings:

<u>By county:</u>	<u># of buildings:</u>	<u>Architectural Style:</u> ¹¹	<u>Plan Form:</u>	<u>Stories:</u>
Wyandotte:	(1)	Vernacular/Folk Victorian	L-Shaped	2
Johnson:	(2)	Vernacular	Rectangle	1
	(1)	Vernacular	Square	2
	(1)	National Folk	L-Shaped	2
	(1)	Gothic Revival	L-Shaped	1 ½
	(1)	Vernacular/Italianate	Rectangle	2
	(2)	Federal	Rectangle	2
	(1)	Federal	L-Shaped	2
Douglas:	(1)	Vernacular	Rectangle	3
	(1)	Agricultural; Vernacular	Rectangle	2
	(1)	Vernacular	Rectangle	2 [In ruins]
	(1)	Vernacular	L-Shaped	2 [In ruins]
	(2)	Vernacular	Rectangle	1 ½ [One in ruins]
	(1)	National Folk	Rectangle	2
	(1)	Second Empire	Irregular	1 ½
	(3)	National Folk	T-Shaped	2 [One in ruins]
Osage:	(1)	Vernacular	Rectangle	2
	(1)	Vernacular	Rectangle	1 ½ [In ruins]
	(1)	Vernacular	Rectangle	1
	(2)	National Folk	Rectangle	2
	(1)	National Folk	L-Shaped	2
Morris:	(1)	Agricultural; Vernacular	Rectangle	2
	(1)	Colonial Revival	Square	2
	(4)	Commercial	Rectangle	2
	(1)	Commercial/Italianate	Rectangle	2
	(1)	Federal	L-Shaped	1
	(1)	Federal	Rectangle	2
	(1)	Vernacular	Square	2
	(1)	Vernacular	U-Shaped	2
	(1)	Vernacular	Rectangle	1

¹¹ For more information and illustrations of architectural typology see: Virginia Savage McAlester, A Field Guide to American Houses: The Definitive Guide to Identifying and Understanding America's Domestic Architecture (New York: Penguin Random House LLC, 2013).

	(3)	National Folk	L-Shaped	2
	(2)	National Folk	T-Shaped	2
	(2)	National Folk	Rectangle	1 ½
	(1)	Folk Victorian	L-Shaped	2
	(1)	Greek Revival	T-Shaped	2
	(2)	Not Applicable/No Style	Rectangle	2 [2 in ruins]
Pawnee:	(1)	Folk Victorian	L-Shaped	1 ½
	(1)	Vernacular	Rectangle	1
	(1)	Agricultural; Vernacular	Rectangle	1 ½
Pawnee/Ft. Larned:				
	(2)	Vernacular	T-Shaped	1
	(1)	Vernacular	Hexagonal	1
	(4)	Vernacular	Rectangle	1
	(1)	Folk Victorian	L-Shaped	1 ½
	(2)	Folk Victorian	U-Shaped	1 ½
Ford/Ft. Dodge:				
	(1)	Vernacular	Rectangle	1
	(1)	Vernacular	U-Shaped	1
	(1)	Vernacular	L-Shaped	1
	(1)	National Folk	L-Shaped	1 ½
	(1)	Federal	Rectangle	1
	(1)	Federal	Rectangle	2
	(1)	Gothic Revival	T-Shaped	1

Construction materials:

<u>By county:</u>	<u>Brick:</u>	<u>Wood:</u>	<u>Limestone:</u>	<u>Sandstone:</u>	<u>Totals:</u>
Wyandotte:	1	-	-	-	1
Johnson:	4	-	5	-	9
Douglas:	-	1	9	1	11
Osage:	-	-	6	-	6
Morris:	10	5	8	-	23
Pawnee:	-	-	-	13	13
Ford/Ft. Dodge:	-	2	1	4	7
Totals:	15	8	29	18	70

Historic functions of the buildings:

By county: # of bldgs.: Historic Function:

Current Function:

Wyandotte:	(1) Domestic; Single Dwelling	Recreation/Culture; Museum complex
Johnson:	(1) Education; School	Recreation/Culture; Museum complex
	(1) Agriculture/Subsistence; Animal Facility	Recreation/Culture; Museum complex
	(2) Domestic; Single Dwelling	Recreation/Culture; Museum complex
	(1) Domestic; Single Dwelling	Domestic; Single Dwelling
	(1) Domestic; Single Dwelling	Commerce/Trade; Restaurant
	(3) Education; School	Recreation/Culture; Museum complex
Douglas:	(1) Education; College	Recreation/Culture; Museum complex
	(4) Domestic; Single Dwelling	Domestic; Single Dwelling
	(2) Domestic; Single Dwelling	Vacant/Not in Use – Ruins (2)
	(1) Agriculture/Subsistence; Animal Facility	Agriculture/Subsistence; Storage
	(1) Government; Post Office	Recreation/Culture; Museum complex
	(1) Religion; Religious Facility	Vacant/Not in Use - Ruins (1)
	(1) Religion; Church-Related Residence	Vacant/Not in Use - Ruins (1)
Osage:	(5) Domestic; Single Dwelling	Domestic; Single Dwelling
	(1) Domestic; Hotel	Vacant/Not in Use - Ruins (1)
Morris:	(1) Agriculture/Subsistence; Animal Facility	Agriculture/Subsistence; Ag. Outbldg.
	(1) Domestic; Single Dwelling	Domestic; Hotel
	(1) Commerce/Trade; Department Store	Education; College
	(1) Commerce/Trade; Department Store	Recreation/Culture; Museum
	(1) Commerce/Trade; Specialty Store	Health Care; Clinic
	(1) Commerce/Trade; Specialty Store	Commerce/Trade; Specialty Store
	(1) Commerce/Trade; Specialty Store	Vacant/Not in Use
	(1) Domestic; Hotel	Commerce/Trade; Restaurant
	(1) Domestic; Single Dwelling	Commerce/Trade; Restaurant
	(1) Domestic; Single Dwelling	Commerce/Trade; Professional
	(2) Domestic; Single Dwelling	Recreation/Culture; Museum
	(5) Domestic; Single Dwelling	Domestic; Single Dwelling
	(1) Domestic; Single Dwelling	Domestic; Multiple Dwelling
	(2) Domestic; Single Dwelling	Vacant/Not in Use
	(1) Religion; Church School	Recreation/Culture; Museum complex
	(2) Transportation; Road-Related (Vehicular)	Vacant/Not in Use [Two in ruins]
Pawnee:	(1) Domestic; Single Dwelling	Domestic; Single Dwelling
	(1) Agriculture/Subsistence; Animal Facility	Vacant/Not in Use
	(1) Agriculture/Subsistence; Ag. Outbuilding	Vacant/Not in Use

Pawnee/Ft. Larned:

(2)	Domestic/Institutional Housing	Recreation/Culture; Museum complex
(1)	Defense/Fortification	Recreation/Culture; Museum complex
(1)	Domestic; Single Dwelling	Recreation/Culture; Museum complex
(2)	Domestic; Multiple Dwelling	Recreation/Culture; Museum complex
(3)	Commerce/Trade; Warehouse	Recreation/Culture; Museum complex
(1)	Other [blacksmith, wheelwright, etc.]	Recreation/Culture; Museum complex

Ford/Ft. Dodge:

(1)	Agriculture/Subsistence; Storage	Recreation/Culture; Museum
(1)	Domestic; Single Dwelling	Domestic; Single Dwelling
(1)	Funerary; Mortuary	Vacant/Not in Use
(1)	Domestic; Institutional Housing	Vacant/Not in Use
(1)	Domestic; Multiple Dwelling	Vacant/Not in Use
(1)	Domestic; Single Dwelling	Government; Post Office
(1)	Health Care; Hospital	Government; Government Office

Recommendations:

To begin, it should be noted that an excellent resource to further investigate a building's condition is the National Park Service's Preservation Brief #35 "Understanding Old Buildings: The Process of Architectural Investigation."¹² The Fort Dodge buildings would certainly benefit from thorough investigations based on the procedures listed in the Preservation Brief. It is also recommended to consult with the Kansas Historical Preservation Office (SHPO) in Topeka, KS for more information, ideas and advisement. The Kansas SHPO can be reached at (785) 272-8681 ext. 240.

During the survey project the following seven buildings were found to need the greatest preservation attention. For more information on the individual building assessments; see the Condition Assessment forms uploaded to the respective KHRI resource numbers at: www.kshs.org/khri

Mitchell, Thomas W., House ca. 1861. (KHRI: 139-365) Burlingame, Osage Co. KS.

Until the 2016-2017 Kansas – Santa Fe Trail Building Survey project was undertaken, this privately-owned residence had never been surveyed for the Historic American Buildings Survey (HABS)¹³ nor for the KHRI database. The center of the east wall is bowing outward approximately 2-3 inches between the two windows. In the past the foundation below that area had been altered. A heating stove exhaust vent pipe exits through a hole drilled in the limestone foundation. The wall is bowing outward

¹² Travis C. McDonald. *Understanding Old Buildings: The Process of Architectural Investigation*. (Washington, D.C.: National Park Service: U.S. Department of the Interior, September 1994), Preservation Briefs 35. Accessed at: <https://www.nps.gov/tps/how-to-preserve/briefs/35-architectural-investigation.htm>

¹³ For more information on the Historic American Building Survey (HABS) refer to: <https://www.archives.gov/research/guide-fed-records/groups/515.html>

just above the vent pipe; which may have further caused structural problems for the east wall. Recommendations: remove the ivy vines attached to all elevations of the house. The vines are old, large and growing in the mortar gaps. During the summer months the west elevation is totally obscured by the vines. A historical architect should be contacted to evaluate the house overall and the condition of the foundation and wall stones in the area where the east wall is bowing out



001: Mitchell, Thomas W., House (KHRI: 139-365) South (front) elevation; looking north-northwest.



002: Mitchell, Thomas W., House (KHRI: 139-365) East elevation; looking northwest. Wall is bowing outward just right of the left window. Here the sun is shining on the protruding portion [circled in green] of the wall and to the left of the vent pipe. Note also the amount and size of the vines growing on the house in this area.



003: Mitchell, Thomas W., House (KHRI: 139-365) Southeast corner of building; looking north. The area of the damaged wall is circled in green. The area is also highlighted by the sun shining on just that area. Note the heating stove vent pipe is purposely installed at that angle to clear the roof overhang.

Big John Farm Limestone Bank Barn ca. 1871 (KHRI: 127-0000-00040) Council Grove vic., Morris Co. KS.

The barn is owned by the Morris County Kansas Highway Department. There are five noticeably predominant concerns regarding the barn. (There may be other concerns not evident during the survey.)

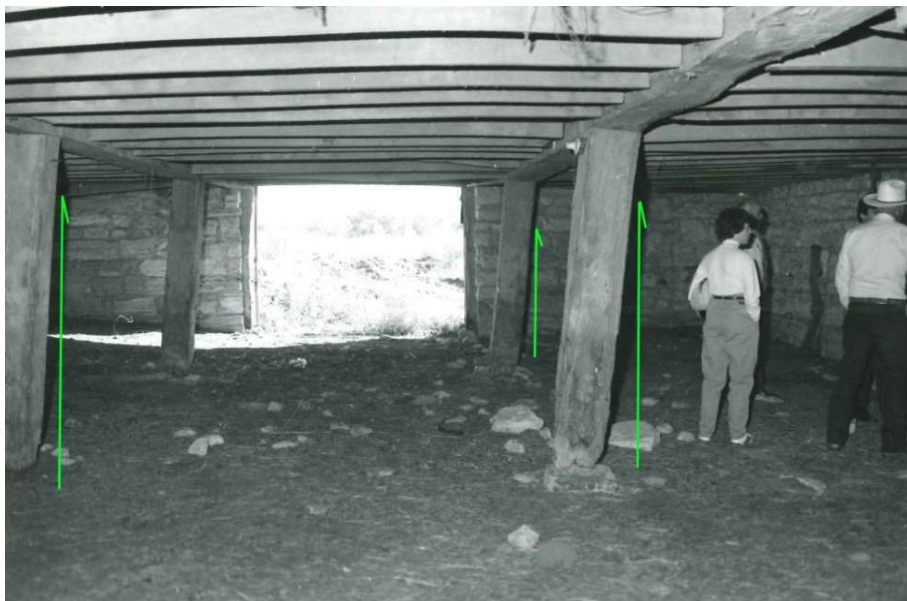
First concern: the entire barn appears to have been shifting to the south since at least the 1990 National Register of Historic Places photos were taken. (See photo #002 looking east inside the barn in 1990.) During the recent April 2017 survey, attention was drawn to the south wall bowing outward at least 4". This is most prominent in the area between the two floors. In place are numerous tie-rods and end plates extending north-south. These were originally intended to stabilize the exterior wall. (See photo #003 looking west at the southeast corner of the barn.) One concern that could be furthering the damage may be that there has been a lot of water on the north elevation of the barn, especially recently due to the missing gutter downspout on the northeast corner of the barn. Additionally, on the west and east elevations, the hydrostatic pressure is pushing the north wing-walls inward, toward the south.

Second and third concerns: east and west elevation wing-walls being pushed inward. (See photo #004 west elevation, north wing-wall and photo #005 east elevation, north wing-wall.) This condition has been further aggravated by excessive water intrusion from the missing gutter downspout on the northeast side of the roof. Half of all the water on the north side of the roof eventually drains behind the barn's north side foundation and the east wing-wall.

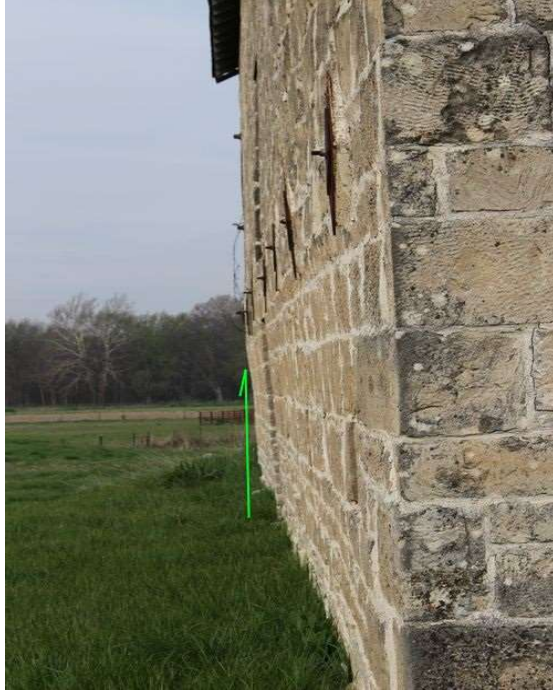
Fourth and fifth concerns: part of the upper east elevation gable is protruding outward approximately 3". (See photo #006.) showing the separation of the wall and the missing downspout.) The same condition is occurring on the west elevation's gable. (See photo #007.)



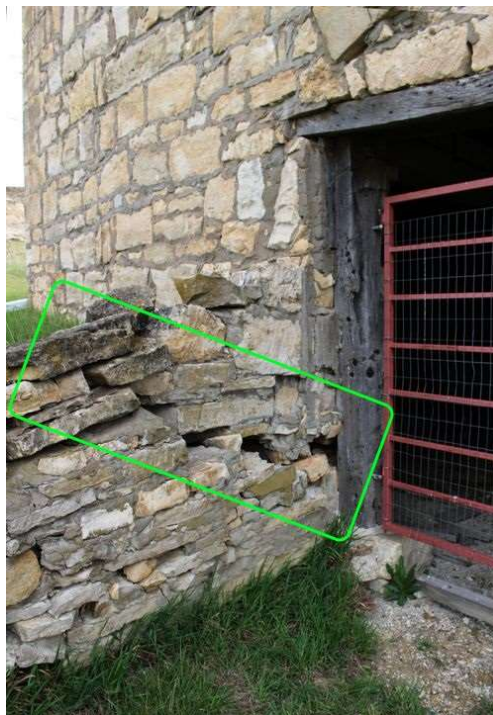
001: Morris: Big John Farm Limestone Bank Barn (KHRI: 127-0000-00040) West and south elevations; looking northeast.



002: Morris: Big John Farm Limestone Bank Barn (KHRI: 127-0000-00040) Inside barn looking east in 1990; note angles of support posts to the straight green lines/arrows added to photo.



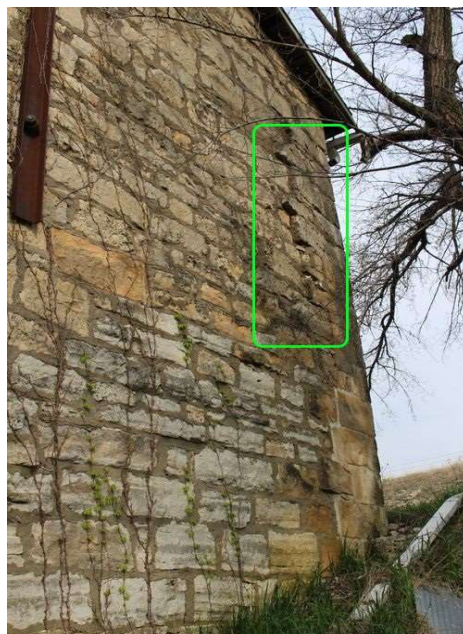
003: Morris: Big John Farm Limestone Bank Barn (KHRI: 127-0000-00040) Looking west at the southeast corner of the barn. Note wall protruding outward/south by comparison with the straight green line/arrow. The image does not represent the severity of the bowed wall as well as actual.



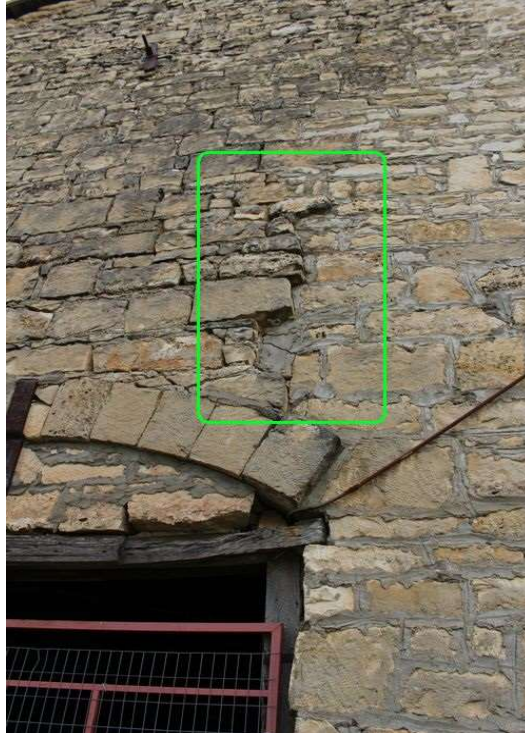
004: Morris: Big John Farm Limestone Bank Barn (KHRI: 127-0000-00040) Looking north at the west elevation's north wing-wall. Area of green box indicates wall separation by hydrostatic pressure.



005: Morris: Big John Farm Limestone Bank Barn (KHRI: 127-0000-00040) Looking north at the east elevation's north wing-wall. Area of green box indicates the wall being overtaken by dirt and hydrostatic pressure moving the stones. Note large tree growing too close to the barn and wing-wall.



006: Morris: Big John Farm Limestone Bank Barn (KHRI: 127-0000-00040) Upper east elevation gable looking north. Green box shows separation and protrusion of the stones. Note at the top right corner of the box is the gutter with the missing downspout.



007: Morris: Big John Farm Limestone Bank Barn (KHRI: 127-0000-00040) Upper west elevation gable looking east. Green box indicates the protrusion of the stones.

Recommendations: after the foundation and hydrostatic problems are corrected the wall stones may have to be reset in the gables and the south elevation. Masonry repairs and repointing should follow the guidance in Preservation Brief #2 - "The Repointing Mortar Joints in Historic Masonry Buildings". The large elm tree growing too close to the foundation and the wing-wall at the northeast corner of the barn should be removed. Refer to the NPS Preservation Brief #35 or contact the Kansas SHPO at (785) 272-8681 ext. 240.

Fort Dodge; Ford Co. KS

Fort Dodge buildings in general: The buildings at Fort Dodge are owned by the Kansas Commission on Veteran's Affairs located at 700 SW Jackson, Ste #701; Topeka, Kansas 66603. Maintenance of the buildings at Fort Dodge has been impacted by budget constraints and the owners' annual capital improvement plans. Many of the buildings require maintenance while others will require more extensive repairs. A few of the buildings have fallen behind on maintenance while others have sat vacant for several years. In the case of the Fort Dodge: Junior Officers' Quarters Building; this building is slated for demolition. The Kansas Historical Society, the National Park Service: National Trails Office, and the Santa Fe Trail Association became aware of this the building's situation late last summer (2017). The building's proposed/planned demolition has been on the owner's capital improvement plans for many years.

Fort Dodge: Junior Officers' Quarters ca. 1870 (KHRI: 057-1426) Fort Dodge, Ford Co. KS. In April 2017 representatives of the KSHS and the NPS toured the Santa Fe Trail associated buildings at Fort

Dodge paying considerable attention to the Junior Officers' Quarters. The wood-framed building does require repair and maintenance. The roof has been replaced but there is water coming around some of the windows into the walls. The floor in the corner of the northeast room has settled in the area of the water intrusion. See condition assessment and KHRI photos for more information. A general consensus was concluded the day of the visit that the building could be saved. The final decision rests with the owners. [Update: the building was still extant as of August 1, 2018. See most recent photos on KHRI.]



001: Fort Dodge Junior Officers' Quarters ca. 1870 (KHRI: 057-1426). West and south (front) elevations; looking northeast.



002: Fort Dodge Junior Officers' Quarters ca. 1870 (KHRI: 057-1426). South (front) and east elevations; looking north-northwest.



003: Fort Dodge Junior Officers' Quarters ca. 1870 (KHRI: 057-1426). South (front) elevation, primary entrance to the east side of Junior Officers' Quarters; looking northeast.



004: Fort Dodge Junior Officers' Quarters ca. 1870 (KHRI: 057-1426). North and west elevations: looking south-southeast.



005: Fort Dodge Junior Officers' Quarters ca. 1870 (KHRI 057:-1426). First-floor, east side of Junior Officers Quarters; details of the lower newel post and hand rail; looking north.



006: Fort Dodge Junior Officers' Quarters ca. 1870 (KHRI: 057-1426). Second-floor, west side of Junior Officers Quarters; view of current hardwood floor condition.



007: Fort Dodge Junior Officers' Quarters ca. 1870 (KHRI: 057-1426). Interior, first-floor east half of Junior Officers Quarters; looking southeast in the northeast room. The wall with the window is the area of water intrusion. Note plaster above register and to the right of the window.



008: Fort Dodge Junior Officers' Quarters ca. 1870 (KHRI: 057-1426). First-floor, east side of Junior Officers Quarters; water damage and settling of the floor from the wall in the northeast corner of the northeast room.

Recommendations: Ultimately try to avoid demolition. First, determine how to stabilize the conditions. Then begin by repairing those things that jeopardize the building as a whole. Consider options for alternative uses and continue with repairs and maintenance as budgets allow. Refer to the NPS Preservation Brief #35 or contact the Kansas SHPO at (785) 272-8681 ext. 240.

Additional Fort Dodge buildings having concerns to note: Officers House ca. 1867 (KHRI: 057-1821-00005); Army Quartermaster Building ca. 1867 (KHRI: 057-1399); Enlisted Men's Barracks ca. 1867 (KHRI: 057-1821-00003); Old Fort Dodge Hospital ca. 1867 (KHRI: 1821-1821-00004). Fort Dodge, Ford Co. KS.

The following observations and recommendations pertain to the above noted four additional Fort Dodge buildings related to the Santa Fe Trail era. All four buildings have had inappropriate applications of concrete/gunite, stucco, or stone veneer panels applied directly to the lower three to four feet of the exterior walls surfaces. These applications have happened over a period of several years with the latest being the stone veneer panels applied to the Old Fort Dodge Hospital. The old hospital building appears not to have been affected yet by the veneer panels applied directly to the original stone faces.

Historically, people have believed that applying a material (with the intention that it will act as a sealer) to the original exterior limestone or sandstone surfaces will protect the stones. The results are exactly the opposite! The inappropriate applications of concrete/gunite, stucco, veneer, etc. tends to trap moisture inside the original stones. The original limestones and sandstones are porous. The trapped water freezes, stones crack and the stone faces spall. Large spalled chunks of the original stones will fall off. The stones will eventually crack all the way through or deteriorate totally away into a powder. Window sills on all four of the following buildings at Fort Dodge have been affected by those actions. Budget constraints have also accompanied the deteriorating conditions of the buildings.



001: Fort Dodge Officers House ca. 1867 (KHRI: 057-1821-00005). West elevation; looking east.



002: Fort Dodge Officers House ca. 1867 (KHRI: 057-1821-00005). South elevation windows; looking north. Concrete filled under window with damaged sill.



003: Fort Dodge Officers House ca. 1867 (KHRI: 057-1821-00005). North elevation window and a replaced, concrete window sill; looking southeast.



004: Fort Dodge Officers House ca. 1867 (KHRI: 057-1821-00005). East elevation at ground level; looking west. Approximately one-half of the stone's face has spalled away. Note concrete in area.



001: Fort Dodge Army Quartermaster Building ca. 1867 (KHRI: 057-1399). East (front) and north elevation; looking southwest.



002: Fort Dodge Army Quartermaster Building ca. 1867 (KHRI: 057-1399). West elevation; looking east. Note the application of concrete first under the second attempt with stucco.



003: Fort Dodge Army Quartermaster Building ca. 1867 (KHRI: 057-1399). West elevation; looking southeast.



004: Fort Dodge Army Quartermaster Building ca. 1867 (KHRI: 057-1399). East elevation at southeast corner of building; looking west. Note bottom corner stone has totally spalled.



001: Fort Dodge Enlisted Men's Barracks ca. 1867 (KHRI: 057-1821-00003). West (front) elevation of south barracks; looking northeast.



002: Fort Dodge Enlisted Men's Barracks ca. 1867 (KHRI: 057-1821-00003). South end of south barracks at the west (front) and south elevations; looking northeast. Note application of concrete/gunite at base of walls that encompasses the entire building; shown here in green.



003: Fort Dodge Enlisted Men's Barracks ca. 1867 (KHRI: 057-1821-00003). East elevation of north barracks; looking northwest.



004: Fort Dodge Enlisted Men's Barracks ca. 1867 (KHRI: 057-1821-00003). East elevation of south barracks; looking west. Note two different applications of concrete/gunite to lower areas of the walls.



005: Fort Dodge Enlisted Men's Barracks ca. 1867 (KHRI: 057-1821-00003). South barracks east elevation, typical window sill and spalled sandstone just above the concrete/gunite; looking west.



006: Fort Dodge Enlisted Men's Barracks ca. 1867 (KHRI: 057-1821-00003). Sandstone window sill and concrete/gunite application on east elevation of south barracks; looking west.



001: Old Fort Dodge Hospital ca. 1867 (KHRI: 057-1821-00004). South (front) and east elevations; looking northwest.



002: Old Fort Dodge Hospital ca. 1867 (KHRI: 057-1821-00004). East elevation exterior basement access; looking west-southwest. Note: spalling of the sandstone above the veneer panels is shown in the green box.



003: Old Fort Dodge Hospital ca. 1867 (KHRI: 057-1821-00004). North and west elevation of what was originally the kitchen wing; looking southeast. Veneer panels continue along the side elevations to the rear elevations.



004: Old Fort Dodge Hospital ca. 1867 (KHRI 1821-1821-00004). West and south elevation of what was originally the kitchen wing; looking north-northeast. Note: spalling of the sandstone above the veneer panels is shown in the green box.

Further recommendations:

Preservation plans should be developed for these buildings by a qualified historical architect who would be able to evaluate and specify what preservation treatments should be undertaken. For more information see the NPS bulletin for historic structures report overview.¹⁴

Create a plan before inspecting the areas having the inappropriate treatments. Prior to inspecting the buildings, develop a plan asking what would be done if removing the material does not create further problems? What hidden conditions may require repair and how would the repair be undertaken? If the original stones are damaged beyond repair; determine what could be done next. Note: avoid pressurized or abrasive cleaning methods.

Inspect the areas of the gunite (Enlisted Men's Barracks) or stucco (Quartermaster Building) to begin with as these two buildings have experienced the most damage. Do an inspection in an inconspicuous area such as the back of a building. Initially do not remove too much material. Avoid damaging the stone underneath. Determine the extent of the damage and if removing the materials would create more problems. Refer to the NPS Preservation Brief #35 or contact the Kansas SHPO at (785) 272-8681 ext. 240.

¹⁴ National Park Service Historic Structure Report Overview accessible at: <https://www.nps.gov/dscw/hsr-overview.htm>

Appendix “A” – Building Resources by County

Sequence #: *Italics = New/first time Surveys:* KHRI number: Distance: IND = Indirect Association:¹⁵

WYANDOTTE:

WY_001	Grinter Place	209-2820-00091	8.0 miles north	<u>IND</u>
--------	---------------	----------------	-----------------	------------

JOHNSON:

JO_001	Shaw. Methodist Msn. E Bldg.	091-1770-00003	.03 miles north	
JO_002	Shaw. Methodist Msn. N Bldg.	091-1770-00004	.10 miles north	
JO_003	Shaw. Methodist Msn. W Bldg.	094-1770-00005	.06 miles north	
JO_004	Mahaffie, J. B., House	091-0000-00005	.40 miles NW	
<u>JO_005</u>	<u>Lanesfield School</u>	<u>091-0000-00009</u>	<u>.13 miles south</u>	
JO_006	McCarthy, John, House	091-1480-00004	1.2 south	<u>IND</u>
JO_007	Reeder, Governor Andrew, House	091-5090-00008	3.7 north	<u>IND</u>
<u>JO_008</u>	<u>Legler Barn (Relocated)</u>	<u>091-3766</u>	<u>.17 miles north</u>	
<u>JO_009</u>	<u>Mahaffie, J. B., Ice House</u>	<u>091-0000-00005</u>	<u>.40 miles NW</u>	

DOUGLAS:

DG_001	Baker University – Old Castle Hall	045-0340-00001	.68 miles SW	<u>IND</u>
<u>DG_002</u>	<u>Baker University – Old Post Office</u>	<u>045-0340-00004</u>	<u>Relocated from location on the trail.</u>	
DG_003	Tucker, Dexter, House	045-0000-00289	.11 miles south	
DG_004	Prairie City Catholic Mission	045-0000-00362	2.0 miles south	<u>IND</u>
DG_005	Prairie City Pastoral Residence	045-0000-00003	2.0 miles south	<u>IND</u>
DG_006	Meunier (Miller), George, House	045-0000-00365	2.13 miles south	<u>IND</u>
DG_007	Simmons Point Ruins	045-0000-00015	.31 miles south	
	Shore & Mewhinney Store	045-0000-00379	Demolished [not part of the survey]	
<u>DG_009</u>	<u>Hayden, William B., House</u>	<u>045-0340-00005</u>	<u>1.50 miles SW</u>	<u>IND</u>
<u>DG_010</u>	<u>Meunier (Miller), George, Barn</u>	<u>045-6073</u>	<u>2.13 miles south</u>	<u>IND</u>
<u>DG_011</u>	<u>Ebright, Homer, House</u>	<u>045-0340-00006</u>	<u>.87 miles SE</u>	<u>IND</u>
DG_012	Cradit, N. C., House	045-0000-00369	1.56 miles SW	<u>IND</u>

¹⁵ Buildings that are indicated as having “Indirect Association (IND)” with the SFT are those buildings not constructed because of the trade but became associated with the Santa Fe Trail due to their proximity to the trail. See page 4: “Association and Location of the Surveyed Buildings Relative to the Santa Fe Trail.” Otherwise they are considered as “Direct Association”

OSAGE:

<u>OS_001</u>	<i>Atchison, Simon, House</i>	139-335	2.0 miles north	<u>IND</u>
" "	" " ancillary structure/outbuilding	" "	2.0 miles north	<u>IND</u>
OS_002	Schuyler, Philip C., House	139-332	.02 miles south	
OS_003	Murphy, William, House	139-333	.09 miles south	
<u>OS_004</u>	<i>Mitchell, Thomas W., House</i>	139-365	.04 miles south	
OS_005	Havana Stage Station Site	139-0690-00002	On the trail	

MORRIS:

MR_001	Hebrank, Frederick X., House	127-1180-00078	.02 miles north	
MR_002	Simcock, Goodson M., House	127-1180-00059	.06 miles north	
MR_003	Hays, Seth, House	127-1180-00031	.16 miles south	
MR_004	Residence [421 N Mission]	127-582	.30 miles north	
MR_005	Mather, Jedediah Peck, House	127-1180-00053	.28 miles north	
MR_006	Kaw Methodist Mission	127-1180-00002	.31 miles north	
MR_007	Residence [317 Kaw]	127-584	.17 miles south	
MR_008	Woodworth, Dr. Abner, House	127-1180-00071	.08 miles south	
MR_009	Rawlinson, Abraham & Mary, House	127-1180-00067	.09 miles south	
MR_010	Last Chance Store	127-1180-00004	.04 miles south	
MR_011	Residence [204 W Hays]	127-643	.15 miles north	
MR_012	Strieby, C. H. and Caroline, House	127-1180-00064	.10 miles south	
MR_013	Strieby-Amrine House	127-1180-00041	.13 miles south	
MR_014	Hughes, Callie & Armstrong, Mollie, H..	127-1180-00066	.13 miles south	
MR_015	Bradford, Dr. James H., House	127-1180-00079	.01 miles north	
MR_016	Miller & Kerr Building	127-526	.02 miles south	
MR_017	Hays Tavern	127-1180-00003	On the trail	
MR_018	Commercial Building	127-1180-00016	.02 miles south	
MR_019	Conn Store	127-1180-00069	.02 miles south	
MR_020	T. S. Huffaker & Co. Building	127-1180-00076	On the trail	
MR_021	Big John Farm Livestock Bank Barn	127-0000-00040	.52 miles north	
MR_022	Six-Mile Creek Stage Station Hist. Dist.	127-0674-00006	.11 miles south [2 bldgs /ruins]	

PAWNEE:

PN_001	Fort Larned – Blockhouse	145-126	On the trail	
PN_002	Fort Larned – Infantry Barracks	145-117	On the trail	
PN_003	Fort Larned – Barracks	145-118	On the trail	
PN_004	Fort Larned – Shops Building	145-119	On the trail	
PN_005	Fort Larned – New Comm. Storehouse	145-120	On the trail	
PN_006	Fort Larned – Old Comm. Storehouse	145-121	On the trail	

PN_007	Fort Larned – Quartermaster Store.	145-122	On the trail	
PN_008	Fort Larned – Officers’ Quarters	145-123	On the trail	
PN_009	Fort Larned – Cmdg. Officer’s Quarters	145-124	On the trail	
PN_010	Fort Larned – Officers’ Quarters	145-125	On the trail	
<u>PN-011</u>	<u>Hillcrest House</u> [Larned, Kansas]	145-135	.71 miles NW	<u>IND</u>
<u>PN 012</u>	<u>Hillcrest Barn</u> [Larned, Kansas]	145-136	.71 miles NW	<u>IND</u>
<u>PN 013</u>	<u>Buhrer, J. W., Farmstead</u> [Garfield, KS]	145-128	On the trail	

FORD: [Note: north boundary of Fort Dodge is on the trail.]

FO_001	Fort Dodge – Cmdg. Officer’s Quarters	057-1821-00002	.07 miles south	
FO_002	Fort Dodge – Enlisted Men’s Barracks	057-1821-00003	.12 miles south	
FO_003	Fort Dodge – Officers House	057-1821-00005	.08 miles south	
FO_004	Fort Dodge – Old Fort Dodge Hospital	057-1821-00004	.09 miles south	
FO_005	Fort Dodge – Army Quartermaster Bldg.	057-1399	.16 miles south	
FO_006	Fort Dodge – Junior Officers’ Quarters	057-1426	.07 miles south	
<u>FO 007</u>	<u>Fort Dodge – Dead House (Relocated)</u>	057-1427	.05 miles south	

“Appendix “B” - Resources by County; Photographs and Details” in the next pages, incorporates photographs of each building surveyed in the SFT buildings survey project. Accompanying each photo of a building is it’s KHRI number, the county where it is located, and its historic name. A brief description of architectural integrity is given for each. The association of each building with the SFT is shown as Direct (DIR) or Indirect (IND). WGS-84 coordinates are also listed. (Note: if the building has a restricted address it will be indicated as “redacted” and on file with the SHPO).

Finally, the buildings’ status relating to the state (SR) and national (NR) historic registers is shown. SR = state register listed; NR = national register listed. When buildings are part of a National Historic Landmark (NHL) that classification is also indicated. A notation of “not assessed” indicates the building has not been presented to the SHPO for consideration of eligibility for possible listing to the historic registers by the Kansas Historic Sites Board of Review.

For examples of building associations with the SFT, refer to the IND/DIR notes below compared to the first two buildings appearing in **“Appendix B: - Resources by County; Photographs and Details”**.

Indirect Association (IND) - *Grinter Place*: “Association w/trail: *IND* 8.0 miles N of SFT” is Indirect Association (IND) because the building is located 8.0 miles north of the Santa Fe Trail. This building was noted for exceptional reasons. See the Indirect Association Building section for explanations.

Direct Association (DIR) - *Shawnee Methodist Mission: East Building*: “Association w/trail: *DIR* .03 miles N of SFT” has Direct Association (DIR) as the building is located less than 1/10th miles north of the Santa Fe Trail.

Appendix “B” – Resources by County; Photographs and Details



KHRI #: 209-2820-00091 [Wyandotte Co.]
 Historic name: Grinter Place
 Date of construction: 1857
 Architectural integrity: Minor changes
 Architectural integrity notes: Basement doors changed replaced.
 Association w/trail: *IND* 8.0 miles N of SFT
 [See Indirect Association Building section for further explanation.]
 WGS-84: 39.074230 -94.759370
 SR/NR eligibility: NR listed: 01/25/1971



KHRI #: 091-1770-00003 [Johnson Co.]
 Historic name: Shawnee Methodist Mission – East Bldg.
 Date of construction: 1841
 Architectural integrity: Minor changes
 Architectural integrity notes: Some of the rooms were altered as needs dictated.
 Association w/trail: *DIR* .03 miles N of SFT
 WGS-84: 39.032660 -94.624430
 SR/NR eligibility: NR listed: 10/15/1966
 NHL: listed: 05/23/1968



KHRI #: 091-1770-00004 [Johnson Co.]
 Historic name: Shawnee Methodist Mission – North Building
 Date of construction: 1845
 Architectural integrity: Minor changes
 Architectural integrity notes: Some of the rooms were altered as needs dictated.
 Association w/trail: *DIR* .10 miles north of SFT
 WGS-84: 39.033290 -94.625390
 SR/NR eligibility: NR listed: 10/15/1966
 NHL listed: 05/23/1968



KHRI #: 091-1770-00005 [Johnson Co.]
 Historic name: Shawnee Methodist Mission - West Building
 Date of construction: 1839
 Architectural integrity: Moderate changes
 Architectural integrity notes: South L-wing added in the 1840s as a dining hall.
 Association w/trail: *DIR* .06 miles north of SFT
 WGS-84: 39.032680 -94.625380
 SR/NR eligibility: NR listed: 10/15/1966
 NHL listed: 05/23/1968



KHRI #: 091-0000-00005 [Johnson Co.]
 Historic name: Mahaffie, J.B., House
 Date of construction: 1857
 Architectural integrity: Moderate changes
 Architectural integrity notes: I-addition added in 1858. Has other additions.
 Association w/trail: *DIR* .40 miles NW of SFT
 WGS-84: 38.891855 -94.801138
 SR/NR eligibility: NR listed: 08/29/1977



KHRI #: 091-3777 [Johnson Co.]
 Historic name: Mahaffie, J.B., Ice House
 Date of construction: 1865
 Architectural integrity: Minor changes
 Architectural integrity notes: Windows and doors have been replaced. Repointed.
 Association w/trail: *DIR* .40 miles NW of SFT
 WGS-84: 38.892090 -94.801350
 SR/NR eligibility: Not assessed



KHRI #: 091-0000-00009 [Johnson Co.]
 Historic name: Lanesfield School
 Date of construction: 1869
 Architectural integrity: Minor changes
 Architectural integrity notes: Bell cupola added in early 1900s.
 Association w/trail: *DIR* .13 miles S of SFT
 WGS-84: 38.789180 -94.991650
 SR/NR eligibility: NR listed: 10/13/1988



KHRI #: 091-1480-00004 [Johnson Co.]
 Historic name: McCarthy, John, House
 Date of construction:
 Architectural integrity: Severe deterioration
 Architectural integrity notes: Water intrusion, wall damage, damaging vegetation
 Association w/trail: *IND* 1.2 miles S of SFT
 WGS-84: 38.770660 -95.001842
 SR/NR eligibility: NR listed: 07/10/2000



KHRI #: 091-5090-00008 [Johnson Co.]
 Historic name: Reeder, Gov. Andrew H., House
 Date of construction: 1850
 Architectural integrity: Moderate changes
 Architectural integrity notes: Covered with stucco, converted to a restaurant
 Association w/trail: *IND* 3.7 miles S of SFT
 WGS-84: 39.020570 -94.713020
 SR/NR eligibility: Not assessed



KHRI #: 091-3766 [Johnson Co.]
 Historic name: Legler, Adam, Barn (Relocated)
 Date of construction: 1864
 Architectural integrity: Integrity is OK; relocated
 Architectural integrity notes: Dismantled, moved to a park, set on a basement foundation
 Association w/trail: *DIR* .17 miles N of SFT
 WGS-84: Orig. location: 38.956290 -94.723860
 SR/NR eligibility: Not assessed



KHRI #: 045-0340-00001 [Douglas Co.]
 Historic name: Baker Univ. Old Castle Hall
 Date of construction: 1858
 Architectural integrity: Moderate repairs
 Architectural integrity notes: Third story was removed and later rebuilt.
 Association w/trail: *DIR* .68 miles S of SFT
 WGS-84: 38.777510 -95.184950
 SR/NR eligibility: NR listed: 02/24/1971



KHRI #: 045-0340-00004 [Douglas Co.]
 Historic name: Palmyra Post Office (Relocated)
 Date of construction: 1857
 Architectural integrity: Moderate changes
 Architectural integrity notes: Dismantled, stored, moved twice. At present location in 1975-76.
 Association w/trail: *DIR* .23 miles N of SFT
 WGS-84: Current location: 38.777399 -95.185037
 SR/NR eligibility: State register listed: 11/18/2017



KHRI #: 045-0000-00289 [Douglas Co.]
 Historic name: Tucker, Dexter, House
 Date of construction: 1863
 Architectural integrity: Minor changes
 Architectural integrity notes: Limestone
 has been painted and stuccoed
 Association w/trail: *DIR* .11 miles S of SFT
 WGS-84: 38.811060 -95.238830
 SR/NR eligibility: Owner is not interested



KHRI #: 045-0000-00362 [Douglas Co.]
 Historic name: Prairie City Catholic Mission (Ruins)
 Date of construction: 1859
 Architectural integrity: Severe deterioration
 Architectural integrity notes: The only extant walls
 are the west and ½ of the north wall.
 Association w/trail: IND 2.0 miles S of SFT
 WGS-84: Redacted [location on file with the KS-SHPO]
 SR/NR eligibility: Not assessed



KHRI #: 045-0000-00003 [Douglas Co.]
 Historic name: Prairie City Pastoral Res. (Ruins)
 Date of construction: 1872
 Architectural integrity: Severe deterioration
 Architectural integrity notes: Extant remains
 are lower 1-2' of walls and basement.
 Association w/trail: *IND* 2.0 miles S of SFT
 WGS-84: Redacted [on file with the KS-SHPO]
 SR/NR eligibility: Not assessed



KHRI #: 045-0000-00365 [Douglas Co.]
 Historic name: Meunier (Miller), George, House
 Date of construction: 1861
 Architectural integrity: Severe deterioration
 Architectural integrity notes: House has suffered
 severe water intrusion. Slated for demolition.
 Association w/trail: IND 2.1 miles S of SFT
 WGS-84: Redacted [on file with the KS-SHPO]
 SR/NR eligibility: Not assessed



KHRI #: 045-0000-00367 [Douglas Co.]
 Historic name: Meunier (Miller), George, Barn
 Date of construction: 1865
 Architectural integrity: Severe deterioration
 Architectural integrity notes: Has additions;
 large hole in south, front elevation
 Association w/trail: *IND* 2.1 miles S of SFT
 WGS-84: Redacted [on file with the KS-SHPO]
 SR/NR eligibility: Not assessed



KHRI #: 045-0000-00015 [Douglas Co.]
 Historic name: Simmons Point (Ruins)
 Date of construction: 1870
 Architectural integrity: Severe deterioration
 Architectural integrity notes: Only extant walls
 are portions of the north and south gables.
 Association w/trail: *DIR* .31 miles S of SFT
 WGS-84: 38.783842 -95.434526
 SR/NR eligibility: Not assessed



KHRI #: 045-0340-00005 [Douglas Co.]
 Historic name: Hayden, William B., House
 Date of construction: 1869
 Architectural integrity: Moderate changes
 Architectural integrity notes: East elevation
 has 2 or 3 wood-framed additions.
 Association w/trail: IND 1.5 miles SW of SFT
 WGS-84: 38.774587 -95.204400
 SR/NR eligibility: Not assessed



KHRI #: 045-0340-00006 [Douglas Co.]
Historic name: Ebright, Homer, House
Date of construction: 1865-1870
Architectural integrity: Minor changes
Architectural integrity notes: Minor
changes to interior; later rear addition
Association w/trail: *D/R* .87 SE of SFT
WGS-84: 38.776330 -95.189180
SR/NR eligibility: Not assessed



KHRI #: 139-333 [Osage Co.]
 Historic name: Murphy, William, House
 Date of construction: 1865
 Architectural integrity: Minor changes
 Architectural integrity notes: Garage addition on east; south has two porch additions
 Association w/trail: DIR .09 miles S of SFT
 WGS-84: 38.751090 -95.838840
 SR/NR eligibility: Not assessed



KHRI #: 139-365 [Osage Co.]
 Historic name: Mitchell, Thomas W., House
 Date of construction: 1861
 Architectural integrity: Moderate changes, deterioration
 Architectural integrity notes: one-story add. on north; E el. wall bowing out; damaging vegetation/vines
 Association w/trail: DIR .04 miles S of SFT
 WGS-84: 38.751480 -95.840660
 SR/NR eligibility: Not assessed



KHRI #: 139-0690-00002 [Osage Co.]
 Historic name: Havana Stage Station Site
 Date of construction: 1858
 Architectural integrity: Severe deterioration
 Architectural integrity notes: E wall is extant; central walls and the west wall in ruins
 Association w/trail: DIR Located on the SFT
 WGS-84: Redacted [on file with the KS-SHPO]
 SR listed: 05/07/1994: formal DOE by keeper



KHRI #: 127-1180-00078 [Morris Co.]
 Historic name: Hebrank, Frederick S., House
 Date of construction: 1864
 Architectural integrity: Moderate changes
 Architectural integrity notes: Second story and porch were added later
 Association w/trail: DIR .02 miles N of SFT
 WGS-84: 38.661910 -96.486260
 SR/NR eligibility: PSIQ received 06/14/2007



KHRI #: 127-1180-00078 [Morris Co.]
 Historic name: Simcock, Goodson, M., House
 Date of construction: 1860
 Architectural integrity: Moderate changes
 Architectural integrity notes: 1863 additions;
 then later converted to apartments.
 Association w/trail: *DIR* .06 miles N of SFT
 WGS-84: 38.662090 -96.491490
 SR/NR eligibility: NR listed: 08/25/1981



KHRI #: 127-1180-00031 [Morris Co.]
 Historic name: Hays, Seth, House
 Date of construction: 1867
 Architectural integrity: Minor changes
 Architectural integrity notes: S elevation; wood-framed
 shed addition. Restored in 1976.
 Association w/trail: *DIR* .16 miles S of SFT
 WGS-84: 38.659210 -96.488340
 NR listed: 09/25/1975; part of Council Grove NHL



KHRI #: 127-582 [Morris Co.]
 Historic name: Residence [421 N Mission]
 Date of construction: 1862
 Architectural integrity: Moderate changes
 Architectural integrity notes: Interior was
 converted to offices. Has one addition.
 Association w/trail: *DIR* .30 miles N of SFT
 WGS-84: 38.665300 -96.494350
 SR/NR eligibility: Not assessed



KHRI #: 127-1180-00053 [Morris Co.]
 Historic name: Mather, Jedediah Peck, House
 Date of construction: 1862
 Architectural integrity: Moderate changes
 Architectural integrity notes: Several additions
 and changes to the roof.
 Association w/trail: *DIR* .28 miles N of SFT
 WGS-84: 38.665110 -96.493200
 SR/NR eligibility: State Register listed: 06/12/1984



KHRI #: 127-1180-00002 [Morris Co.]
 Historic name: Kaw Methodist Mission
 Date of construction: 1851
 Architectural integrity: Moderate changes
 Architectural integrity notes: Changes to interior; 1855, converted into a home.
 Association w/trail: *DIR* .31 miles N of SFT
 WGS-84: 38.665938 -96.493973
 SR/NR eligibility: NR listed: 07/01/1977



KHRI #: 127-584 [Morris Co.]
 Historic name: Residence [317 Kaw]
 Date of construction: 1866
 Architectural integrity: Minor changes
 Architectural integrity notes: One-story wood-framed shed addition on south elevation.
 Association w/trail: *DIR* .17 miles S of SFT
 WGS-84: 38.656280 -96.490530
 SR/NR eligibility: Not assessed



KHRI #: 127-584 [Morris Co.]
 Historic name: Woodworth, Dr. Abner, House
 Date of construction: 1864
 Architectural integrity: Moderate changes
 Architectural integrity notes: Front porch was changed; two west shed additions.
 Association w/trail: *DIR* .08 miles S of SFT
 WGS-84: 38.659760 -96.491780
 SR/NR eligibility: Not assessed



KHRI #: 127-1180-00067 [Morris Co.]
 Historic name: Rawlinson, Abraham and Mary, House
 Date of construction: 1860
 Architectural integrity: Moderate changes
 Architectural integrity notes: House had several changes having had different functions; has original look now.
 Association w/trail: *DIR* located on the SFT
 WGS-84: 38.658510 -96.498830
 SR/NR eligibility: Not assessed



KHRI #: 127-1180-00004 [Morris Co.]
 Historic name: Last Chance Store
 Date of construction: 1857
 Architectural integrity: Moderate changes
 Architectural integrity notes: Changes b/c of numerous functions have been reversed.
 Association w/trail: *DIR* .04 miles S of SFT
 WGS-84: 38.659950 -96.494910
 NR listed: 06/21/1977; updated 05/06/1986
 Part of the Council Grove NHL



KHRI #: 127-643 [Morris Co.]
 Historic name: Residence [204 W Hays]
 Date of construction: 1862
 Architectural integrity: Moderate changes
 Architectural integrity notes: Has several additions and porches. Covered with aluminum siding.
 Association w/trail: *DIR* .15 miles N of SFT
 WGS-84: 38.663260 -96.492000
 SR/NR eligibility: Not assessed



KHRI #: 127-1180-00064 [Morris Co.]
 Historic name: Strieby, C. H. & Caroline, House
 Date of construction: 1864
 Architectural integrity: Moderate changes
 Architectural integrity notes: Two rear shed additions and a wrap-around porch.
 Association w/trail: *DIR* .10 miles S of SFT
 WGS-84: 38.659390 -96.493360
 SR/NR eligibility: Not assessed



KHRI #: 027-1180-00041 [Morris Co.]
 Historic name: Strieby-Amrine House
 Date of construction: 1868
 Architectural integrity: Minor changes
 Architectural integrity notes: one of seven houses constructed by C. H. Strieby for his family.
 Association w/trail: *DIR* .13 miles S of SFT
 WGS-84: 38.658852 -96.493488
 SR/NR eligibility: Not assessed



KHRI #: 127-1180-00066 [Morris Co.]
 Historic name: Hughes & Armstrong House
 Date of construction: 1869
 Architectural integrity: Minor changes
 Architectural integrity notes: Vinyl siding;
 1 ½ story wood-framed rear addition
 Association w/trail: *DIR* .13 miles S of SFT
 WGS-84: 38.659050 -96.492980
 SR/NR eligibility: Not assessed



KHRI #: 127-0000-00079 [Morris Co.]
 Historic name: Bradford, Dr. James H., House
 Date of construction: 1860
 Architectural integrity: Major changes
 Architectural integrity notes: Several modifications and
 additions have hidden the original plan
 Association w/trail: *DIR* .01 miles N of SFT
 WGS-84: 38.661520 -96.483140
 SR/NR eligibility: Not assessed



KHRI #: 127-526 [Morris Co.]
 Historic name: Miller & Kerr Building
 Date of construction: 1863
 Architectural integrity: Minor changes
 Architectural integrity notes: Rear addition;
 changes to interior functions/offices
 Association w/trail: *DIR* .02 miles S of SFT
 WGS-84: 38.661080 -96.489590
 NR listed: Contributor to the NR district



KHRI #: 127-1180-00003 [Morris Co.]
 Historic name: Hays Tavern
 Date of construction: 1863
 Architectural integrity: Moderate changes
 Architectural integrity notes: Changes have been
 reversed; historic photos used for renovations
 Association w/trail: *DIR* located on N side of the SFT
 WGS-84: 38.661430 -96.489850
 NR listed: 10/15/1966. Part of Council Grove NHL and
 contributor to Downtown Council Grove Hist. District.



KHRI #: 127-1180-00016 [Morris Co.]
 Historic name: Commercial Building
 Date of construction: 1872
 Architectural integrity: Moderate changes
 Architectural integrity notes: Rear addition;
 changes to int. functions and spaces
 Association w/trail: *DIR* .02 miles S of SFT
 WGS-84: 38.661060 -96.489910
 NR listed: Contributor to the NR district



KHRI #: 127-1180-00069 [Morris Co.]
 Historic name: Conn Store
 Date of construction: 1858
 Architectural integrity: Major changes
 Architectural integrity notes: Numerous exterior
 and interior changes
 Association w/trail: *D/R* .02 miles S of SFT
 WGS-84: 38.660950 -96.490260
 NR listed: Non-contributor to the NR district



KHRI #: 127-14180-00076 [Morris Co.]
 Historic name: T. S. Huffaker & Co. Building
 Date of construction: 1869
 Architectural integrity: Minor changes
 Architectural integrity notes: Renovations
 to interior as/when functions dictated
 Association w/trail: *DIR* located on the SFT
 WGS-84: 38.661180 -96.490780
 NR listed: Non-contributor to the NR district



KHRI #: 127-0000-00040 [Morris Co.]
Historic name: Big John Farm Livestock Bank Barn
Date of construction: 1871
Architectural integrity: Minor changes
Architectural integrity notes: 1990s: repairs were made;
now those repairs need major additional attention
Association w/trail: DIR .52 miles N of SFT
WGS-84: 38.670120 -96.449450
SR/NR eligibility: NR listed: 10/25/1990



KHRI #: 127-0674-00006 [Morris Co.]
 Historic name: Six-Mile Creek Stage Station
 Date of construction: 1863
 Architectural integrity: Ruins
 Architectural integrity notes: Resources need stabilization; prevent further deterioration
 Association w/trail: *DIR* .11 miles S of SFT
 WGS-84: 38.605030 -96.856190
 SR/NR eligibility: NR listed: 05/11/1995



KHRI #: 127-0674-00006 [Morris Co.]
 Historic name: Six-Mile Creek Stage Station: Barn
 Date of construction: 1863
 Architectural integrity: Ruins
 Architectural integrity notes: Site resources need stabilization/ prevent further deterioration
 Association w/trail: *DIR* .11 miles S of SFT
 WGS-84: 38.605260 -96.855640
 SR/NR eligibility: NR listed: 05/11/1995



KHRI #: 145-126 [Pawnee Co.]
 Historic name: Fort Larned: Blockhouse
 Date of construction: 1865
 Architectural integrity: Reconstructed
 Architectural integrity notes: Rebuilt on original site with original materials
 Association w/trail: *DIR* located on the SFT
 WGS-84: 38.182890 -99.216460
 NR listed: 10/15/1966 [NHL-1960]



KHRI #: 145-117 [Pawnee Co.]
 Historic name: Fort Larned: Infantry Barracks
 Date of construction: 1865
 Architectural integrity: Minor changes
 Architectural integrity notes: Also serves as the visitors' center, gift shop and fort artifact displays
 Association w/trail: *DIR* located on the SFT
 WGS-84: 38.183700 -99.218580
 NR listed: 10/15/1966 [NHL-1960]



KHRI #: 145-118 [Pawnee Co.]

Historic name: Fort Larned: Barracks

Date of construction: 1865

Architectural integrity: Minor changes

Architectural integrity notes: barracks to 1871; then converted to post hospital

Association w/trail: *DIR* located on the SFT

WGS-84: 38.183700 -99.218580

NR listed: 10/15/1966 [NHL: 1960]



KHRI #: 145-119 [Pawnee Co.]

Historic name: Fort Larned: Shops Building

Date of construction: 1867

Architectural integrity: Minor changes

Architectural integrity notes: Oven has been rebuilt and is used regularly during special events

Association w/trail: *DIR* located on the SFT

WGS-84: 38.183720 -99.217490

NR listed: 10/15/1966 [NHL: 1960]



KHRI #: 145-120 [Pawnee Co.]

Historic name: Fort Larned: New Commissary

Date of construction: 1868

Architectural integrity: Minor changes

Architectural integrity notes: Also served as post chapel, library and school after 1871

Association w/trail: *DIR* located on the SFT

WGS-84: 38.183030 -99.217130

NR listed: 10/15/1966 [NHL: 1960]



KHRI #: 145-121 [Pawnee Co.]

Historic name: Fort Larned: Old Commissary Storehouse

Date of construction: 1866

Architectural integrity: Moderate changes

Architectural integrity notes: south elevation wall was reconstructed in several places

Association w/trail: *DIR* located on the SFT

WGS-84: 38.182670 -99.217320

NR listed: 10/15/1966 [NHL: 1960]



KHRI #: 145-122 [Pawnee Co.]
 Historic name: Ft Larned: Quatermaster Store
 Date of construction: 1867
 Architectural integrity: Moderate changes
 Architectural integrity notes: Renovated/orig;
 after military use; was converted to barn
 Association w/trail: *DIR* located on the SFT
 WGS-84: 38.182440 -99.217910
 NR listed: 10/15/1966 [NHL: 1960]



KHRI #: 145-123 (Pawnee Co.)
 Historic name: Fort Larned: Officers' Quarters
 Date of construction: 1867
 Architectural integrity: Minor changes
 Architectural integrity notes: After early 1870s; served
 as Post Surgeon's Quarters
 Association w/trail: *DIR* located on the SFT
 WGS-84: 38.182470 -99.218800
 NR listed: 10/15/1966 [NHL: 1960]



KHRI #: 145-124 [Pawnee Co.]
 Historic name: Fort Larned: Com. Off Quarters
 Date of construction: 1867
 Architectural integrity: Minor changes
 Architectural integrity notes: Needs maint.
 work on exterior trim and porches
 Association w/trail: *DIR* located on the SFT
 WGS-84: 38.182810 -99.218980
 NR listed: 10/15/1966 [NHL: 1960]



KHRI #: 145-125 [Pawnee Co.]
 Historic name: Fort Larned: Officers' Quarters
 Date of construction: 1867
 Architectural integrity: Minor changes
 Architectural integrity notes: Currently displayed to
 resemble five separate living quarters
 Association w/trail: *DIR* located on the SFT
 WGS-84: 38.183150 -99.219180
 NR listed: 10/15/1966 [NHL: 1960]



KHRI #: 145-135 [Pawnee Co.]
 Historic name: Hillcrest House
 Date of construction: 1878
 Architectural integrity: Minor changes
 Architectural integrity notes: Metal roof has been replaced recently
 Association w/trail: *IND* .71 miles NW of SFT
 WGS-84: 38.178250 -99.114480
 SR/NR eligibility: Not assessed



KHRI #: 145-136 [Pawnee Co.]
 Historic name: Hillcrest Barn
 Date of construction: 1878
 Architectural integrity: Moderate changes
 Architectural integrity notes: E end of barn converted to garage; has weakened overall building. Note crack.
 Association w/trail: *IND* .71 miles NW of SFT
 WGS-84: 38.178420 -99.115040
 SR/NR eligibility: Not assessed



KHRI #: 145-128 [Pawnee Co.]
 Historic name: Buhrer, J. W., Farmstead
 Date of construction: 1878
 Architectural integrity: Moderate changes
 Architectural integrity notes: Interior is void of any original features
 Association w/trail: *DIR* .02 miles SW of SFT
 WGS-84: 38.125470 -99.172660
 SR/NR eligibility: Not assessed



KHRI #: 057-1821-00002 [Ford Co.]
 Historic name: Fort Dodge: Commanding Off. Quarters
 Date of construction: 1867
 Architectural integrity: Minor changes
 Architectural integrity notes: Front, south elevation is painted; north elevation stuccoed; has garage add.
 Association w/trail: *DIR* .07 miles S of SFT
 WGS-84: 37.732120 -99.936050
 SR/NR eligibility: Not assessed



KHRI #: 057-1821-00003 [Ford Co.]
 Historic name: Fort Dodge: Enlisted Barracks
 Date of construction: 1867
 Architectural integrity: Major changes
 Architectural integrity notes: Adobe barracks removed 1930s; two barracks combined
 Association w/trail: *DIR* .12 miles S of SFT
 WGS-84: 37.731090 -99.935600
 SR/NR eligibility: Not assessed



KHRI #: 057-1821-00005 [Ford Co.]
 Historic name: Fort Dodge: Officers House
 Date of construction: 1867
 Architectural integrity: Moderate changes
 Architectural integrity notes: Ext. needs major work; interior renovated as function needs dictated.
 Association w/trail: *DIR* .08 miles S of SFT
 WGS-84: 37.731650 -99.935460
 SR/NR eligibility: Not assessed



KHRI #: 057-1821-00004 [Ford Co.]
 Historic name: Fort Dodge: Old Hospital
 Date of construction: 1867
 Architectural integrity: Major changes
 Architectural integrity notes: Several exterior additions; interior offices
 Association w/trail: *DIR* .09 miles S of SFT
 WGS-84: 37.732260 -99.937060
 SR/NR eligibility: Not assessed



KHRI #: 057-1399 [Ford Co.]
 Historic name: Fort Dodge: Army Quartermaster Bldg.
 Date of construction: 1867
 Architectural integrity: Moderate changes
 Architectural integrity notes: building covered w/stucco; stucco damaging stone surface; interior renovated
 Association w/trail: *DIR* .16 miles S of the SFT
 WGS-84: 37.731330 -99.937530
 SR/NR eligibility: Not assessed



KHRI #: 057-1426 [Ford Co.]
 Historic name: Fort Dodge: Jr Off Quarters
 Date of construction: 1870
 Architectural integrity: Minor ext. changes
 Architectural integrity notes: Slated for demolition although repairable
 Association w/trail: *DIR* .07 miles S of SFT
 WGS-84: 37.732070 -99.935730
 SR/NR eligibility: Not assessed



KHRI #: 057-1427 [Ford Co.]
 Historic name: Fort Dodge: Dead House [Relocated]
 Date of construction: 1870
 Architectural integrity: Rear elevation shed addition
 Architectural integrity notes: rear wall removed creating a single room; interior features were removed
 Association w/trail: *DIR* original loc./.05 miles S of SFT
 WGS-84: 37.731370 -99.937900
 SR/NR eligibility: Not assessed

Appendix “C” – Mitchell, Thomas W., House ca. 1861 (KHRI 139-365) Osage Co. Burlingame, KS – Research and Details

The following research information is an example of a higher level of available documentation that was discovered for one building during the SFT Buildings Survey project. Prior to this, this building had never been surveyed for the KHRI database and therefore had never been considered relevant to the Santa Fe Trail. The Thomas W. Mitchell House (ca. 1861) is located .04 miles south of the Santa Fe Trail in Burlingame, Osage Co. Kansas. Mitchell was a stone mason and built several Osage Co. buildings.

Research and newspapers articles (November 1865 – September 1913) re. Thomas W. Mitchell:

“Thos. Mitchell is repairing his residence, also.” ¹⁶

“Thomas Mitchel – assisted by Richard Williams – is doing a good job of pointing on the M. E. C. edifice. He put the marble slab in its place on Monday...” ¹⁷

“Thomas Mitchell has traded his property in town to H. C. Sheldon, for the property known as the Superior House, but which has more recently been turned into a cheese factory...” ¹⁸

“There was a very fair attendance out to hear Thomas W. Mitchell talk on the railroad question Monday night. Mr. Mitchells’ talk was in favor of Government ownership and showed much careful study.” ¹⁹

“It was pretty close to Sunday morning when the Lyceum adjourned last Saturday night. The tariff question was finally and effectually settled, the result being in favor of both sides. James Oliver and H. C. Finch advocated protection, and W. G. Jameson, Peter Kirby, Thomas W. Mitchell and J. H. Crumb were against it. The debate was a hot one and was ably handled on both sides. The Lyceum adjourned, to hold no more meetings this season.” ²⁰

“Thomas W. Mitchell left, last Tuesday, for an extended trip in the East. He will be gone all summer and expects to visit points in Maine before returning home.” ²¹

“Thomas W. Mitchell’s pension has been increased. He has been getting \$6.00 a month. It will be \$12.00, hereafter.” ²²

“Fifth Kansas Cavalry... Thomas W. Mitchell enlisted August 7, 1861, from Leavenworth and served his three years. Was mustered out with the regiment September 5, 1864, as sergeant of Co. D. resided many years south of Burlingame on the old Superior town site...” ²³

¹⁶ *The Osage County Chronicle* (Burlingame, KS), 11 November 1865 p. 3.

¹⁷ *The Osage County Chronicle* (Burlingame, KS), 04 July 1868 p. 3.

¹⁸ *The Osage County Chronicle* (Burlingame, KS), 17 October 1868 p. 3.

¹⁹ *The Osage County Chronicle* (Burlingame, KS), 13 February 1896 p. 5.

²⁰ *The Osage County Chronicle* (Burlingame, KS) 14 May 1896 p. 5.

²¹ *The Osage County Chronicle* (Burlingame, KS) 10 June 1897 p. 2.

²² *The Osage County Chronicle* (Burlingame, KS) 29 March 1900 p. 5.

"T. W. Mitchell has moved to his house in South Park one door west of Wm. Hayson." ²⁴

"Stewart Mitchell, wife and young daughter, are here from Oklahoma City, visiting at the T. W. Mitchell home." ²⁵

"T. W. Mitchell – T. W. Mitchell, whose birthday was celebrated at his home Sunday, was born February 9th, 1834. His birthplace the state of Maine. He came to Kansas in 1858. After the opening of the rebellion he went to Ft. Leavenworth and enlisted in the 5th Kansas Vol. in '65 [sic.] serving over three years. On his return from the army in 1864, he went back east to Mass., and in the spring of 1865 was married and returned to Burlingame where he has resided ever since. [See footnote 11 regarding date of marriage.] In 1869 he bought the farm 2 miles south of town which he still owns with considerable other property accumulated by careful management and good business methods.

Mr. Mitchell was born at the foot of Mt. Katahdin on the day of the greatest storm that northern state had known to that date, and it would seem that the asperity of that climate, and the rugged scenery amid which his youth was spent, may have had an influence in producing a character strong and forceful, yet to his friends most gentle and kindly. While Mr. Mitchell is not an academician yet he is a reader, and especially likes vigorous writers. Among his favorites are Emerson, Spencer and Carlyle. No vapid, prosy author for Tom Mitchell.

We trust this anniversary of his birthday will be repeated many times." ²⁶

"T. W. Mitchell Dead. The passing of another pioneer is recorded this week in the death of Thomas W. Mitchell. Mr. Mitchell had been in poor health for some time, and last Thursday he fell, fracturing his hip, and from that time he gradually failed until his death occurred at 10 o'clock Tuesday morning. His son, Stewart Mitchell, a merchant in Oklahoma City, arrived early in the week and the eldest son, Guy will be here today from Newton. Funeral services will be held from the family home tomorrow (Friday) afternoon at two o'clock. A more complete obituary of the deceased who was past eighty-one years of age and who had lived in this city since the early sixties, will be published next week." ²⁷

"Burlingame Pioneer is Dead. – Thomas W. Mitchell, Living in Osage County Since Territorial Days, Is Victim of Paralysis. Special to The Capital.

Burlingame, Nov. 11. – Thomas W. Mitchell, very well known in Osage county and a resident of Kansas since the territorial days, died at his home in this city yesterday following a stroke of paralysis. The deceased was 81 years of age and was a native of Massachusetts. He was a man of extensive reading, but held decided and radical views as to politics and religion. His aged wife, one daughter, Miss Metta, and his six sons survive him." ²⁸

²³ *The Burlingame Enterprise* (Burlingame, KS) 04 June 1903 p. 4.

²⁴ *The Burlingame Enterprise* (Burlingame, KS) 31 October 1912 p. 5.

²⁵ *The Burlingame Enterprise* (Burlingame, KS) 13 February 1913 p. 5.

²⁶ *Ibid.* Further research revealed their marriage certificate was dated 12/19/1864; not in the spring of 1865 as this article states.

²⁷ *The Burlingame Enterprise* (Burlingame, KS) 11 November 1915 p. 4.

²⁸ *The Topeka Daily Capital* (Topeka, KS) 12 November 1915 p. 9.

"T. W. Mitchell. – The Funeral of T. W. Mitchell was held at his home in this city on Friday afternoon, Nov. 12. The entire family connections were present with the exception of one son and his family, Greeley of San Francisco. True to Mr. Mitchell's well known dislike for pomp or display, and in keeping with some of his expressed wishes, there was no minister, music, or flowers in evidence. Charles H. Curtis, of Osage City, a close personal friend of the deceased when he resided in Burlingame, conducted a brief service at the home, and at the grave simply read the appended verses, favorites with the deceased. The services were largely attended by old friends and neighbors who knew this citizen so well.

Thomas Whittemore Mitchell was born February 9, 1834 at Milo, Maine. He came to Burlingame, Kansas April 12, 1858. He enlisted in the Union Army in the War of the Rebellion August 7, 1861 in Co. B, 5th Kansas Cavalry and was discharged Sept. 5, 1864. Mr. Mitchell was brevetted a captain of volunteers at the close of the war by Samuel J. Crawford, governor of Kansas.

He was married Dec. 19, 1864 to Miss Mary Howard Faunce of Kingston, Mass. and returned to Burlingame in April 1865. To this union were born seven children, six sons and one daughter, all of whom with thirteen grandchildren and the widow survive. The children are Guy L, of Newton, Kan.; Stewart, of Oklahoma City; H. Greeley, of San Francisco, Calif.; Mary E., Neil T., Ralph A. and Leon R., all of Burlingame.

Before his death Mr. Mitchell was the only surviving member of his father's family, and he is the first of his own immediate family to be taken away. He was one of the first lot owners in Burlingame's beautiful cemetery, having purchased a lot at the time of its organization in 1869.

He came to Kansas in 1858, being then twenty-four years of age. He learned the stone mason's trade after coming here, and as a young mason worked on the City building. Afterwards as a contractor, he built a number of dwellings still standing in the city. At the time the war broke out he was engaged in the building of the stone house on the hill occupied by L. R. Adams for so many years. He answered the call of the union, laid down his trowel, nailed up the windows and entered the services of his country. After the war he returned and finished the building, which is still occupied as a dwelling and speaks of the integrity of the builder.

In 1869 Mr. Mitchell traded the stone house for his splendid farm two miles south of town, where followed the occupation of a farmer for thirty-four years. Retiring in 1903, he moved to a comfortable home in town, where he resided until his death, on Nov. 10, 1915, aged 81 years, 9 months and 1 day. His modesty is well illustrated by the fact that his appointment as captain by Gov. Crawford was really never made known until his commission was discovered among his papers, and even his most intimate friends never knew that he held the office of captain.

He was a man of wide reading and was able to quote at length from many and varied authors. He was a thinker of beautiful thoughts and treasured up in his mind the beautiful thoughts of others..."²⁹

"Friend of Mitchell Haunted by Poster. The Chronicle, Nov. 28, 1895: There was in Chicago, right at the close of the war, a young painter and frescoer whose name may be told sometime. He was a well educated young man who had served his country well in its time of peril, who in his service at the front had never shown the first sign of faint-heartedness, not even when bullets were flying thickest.

²⁹ *The Burlingame Enterprise* (Burlingame, KS) 18 November 1915 p. 5.

One evening, on coming out of the dining room of a hotel, he noticed that his hat was not where he had left it. On looking about he saw it laying on the floor near the hotel bar. He walked over to get it, and, as he stooped to pick it up, a great ruffian gave the hat a kick and sent it spinning along the bar room floor. He raised up and glanced at the rogue, who said to him coolly, "A man who won't resent that is a coward."

He boiled within; the insult seemed more than he could stand. But he walked quietly over to the hat and started to pick it up, when again the ruffian kicked it more violently than before. The big brute didn't notice, when he made the second effort at being insolent, that the man whom he tantalized was about to pick up the hat with his left hand, having his right hand beneath his coat. But the hat had hardly left his foot when a dagger was planted in his breast, out it was pulled and in it was thrust again, and again.

He was wanted, so much wanted that after waiting two or three days for a clearing of the sky, which only grew darker about him, he concluded to leave for the West. He struck out, and after going so far that he thought it was impossible to be reached by officers, he concluded to stop in a town. He was greeted by a familiar face – the face of one of those posters. Away he went farther and farther west, but those awful posters haunted him everywhere, always either in reality or in fancy, and he saw the real ones so much that there was not much room left for imagining them. Every town had them, and the farther he came the thicker they seemed to be. He finally reached Leavenworth, and found that he seemed to be wanted more there than in any other place. It would not do to stay there, and so, on he came to Burlingame, then on the very border of civilization. And there he did find a friendly face; an old acquaintance; and, much to his relief, no posters.

Thomas W. Mitchell, who now lives on his well tilled farm south of Burlingame, then lived in the village. He served in the army with the fleeing Frescoer and they spent three days together talking over old times. Just as the Frescoer was about to leave he told Mr. Mitchell the story of the stabbing, and said that he was going where every man was a law unto himself. About a month after he had gone, Mr. Mitchell received a letter from Chicago and enclosed was one for the friend who had gone without saying when he would return. The letter was laid aside for him.

For thirty years the Frescoer has been about the world going through all kinds of experiences. But he is getting older now. Time is beginning to tell on him and the continual worry of that misfortune in his younger days has played no small part in depriving him of the peace of mind he wished for. After the thirty years of absence he concluded to come to see his old friend at Burlingame. During the past summer he spent much of his time here.

The Frescoer opened it slowly and read deliberately. It gave him the information that the man whom he had stabbed had not died but recovered. He heaved a monstrous sigh of relief, and said 'That's haunted me for thirty years.'"

[The following paragraph accompanied the 1895 photograph of Thomas W. Mitchell's house printed for the article about Burlingame's centennial in 1963. See footnote #30 for more information.]

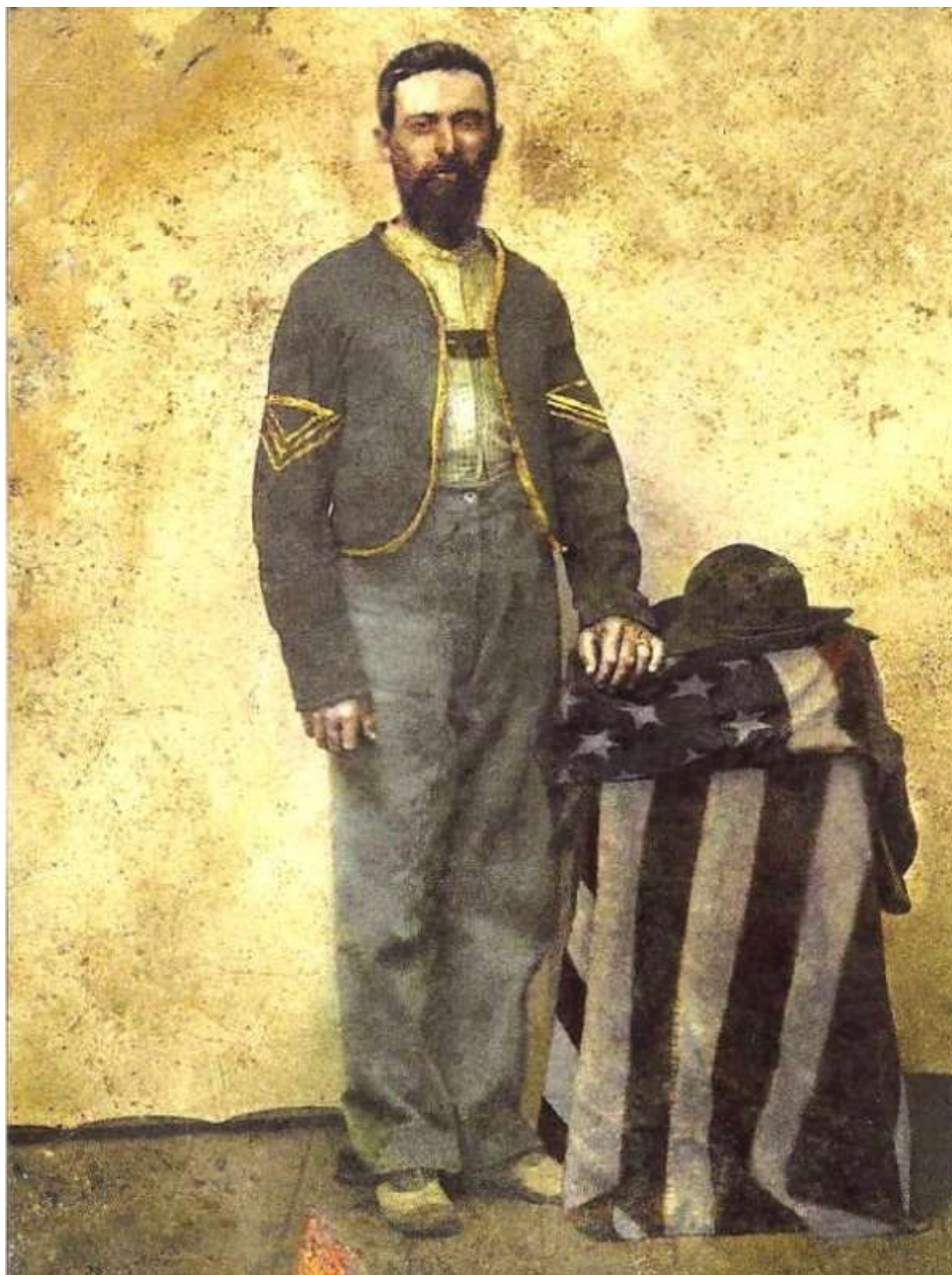
"Pictured here is a stone house built by Thomas W Mitchell in Burlingame and is still in use although it was nearly completed when Mr. Mitchell joined the army to fight in the Civil War. He returned to find someone else living there and the man was said to be wearing Mr. Mitchell's jacket he had left hanging inside the house when he left." ³⁰



Pictured here is a stone house built by Thomas Mitchell in Burlingame and is still in use although it was nearly completed when Mr. Mitchell joined the army to fight in the Civil War

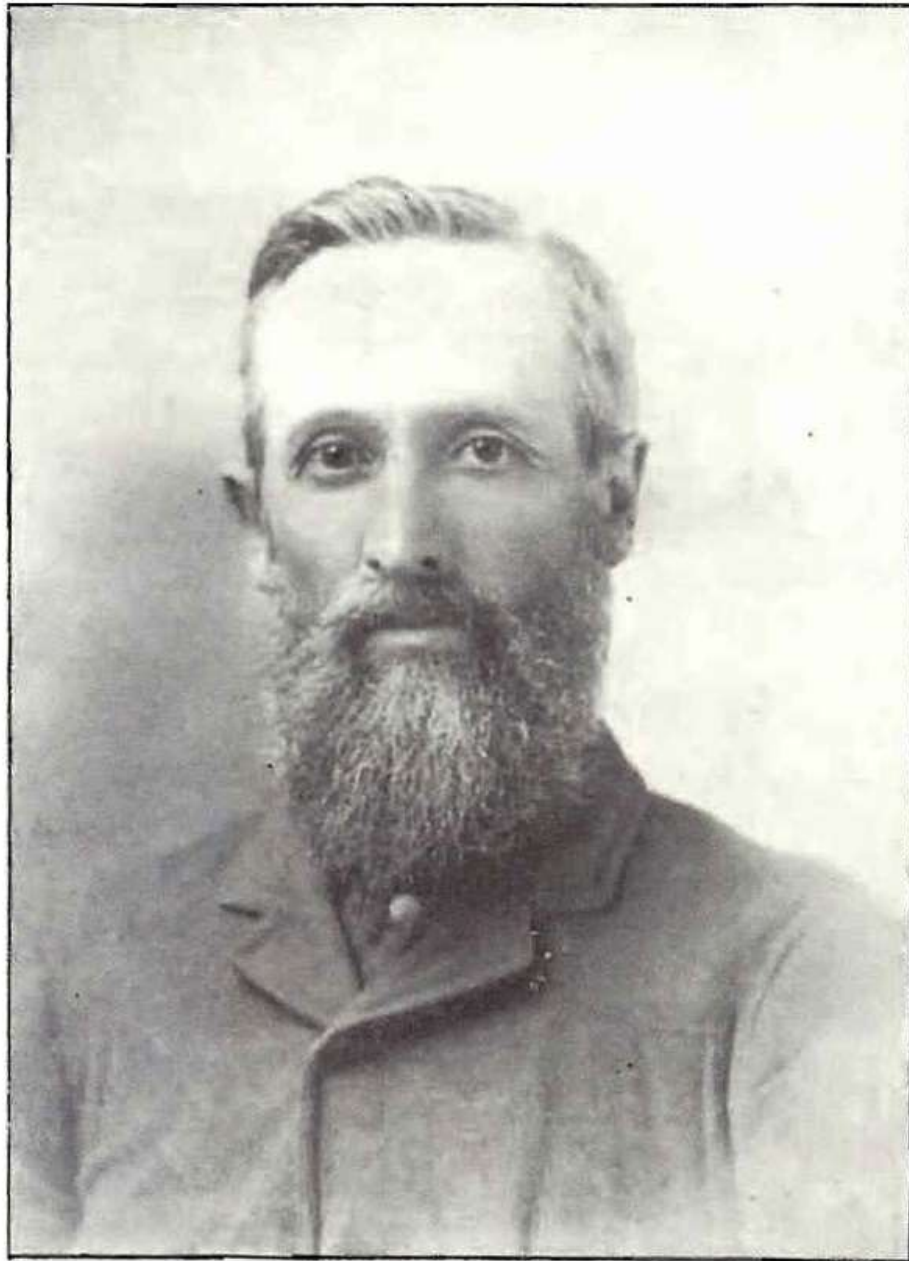
He returned to find someone else living there and the man was said to be wearing Mr. Mitchell's jacket he left hanging inside the house when he left.

³⁰ *The Enterprise Chronicle* (Burlingame, KS) 19 September 1963 p. 6D – Centennial Edition. This article was printed as a portion of the first printing in *The Chronicle* (Burlingame, KS) 28 November 1895 p. 5.



Thomas W. Mitchell donning a military jacket (approx. 1862).³¹

³¹ Accessed on ancestryinstitution.com at: <https://www.ancestryinstitution.com/mediaui-viewer/tree/49174847/person/20192143538/media/69e1d5f7-378e-4a55-a072-03ba029c52c0>



THOMAS W. MITCHELL, 50.

(ca. 1884) ³²

³² Accessed on ancestryinstitution.com at: <https://www.ancestryinstitution.com/mediaui-viewer/tree/48373823/person/20103778555/media/2dc0f16c-35a7-44bd-8f14-a5985013f097>

The Commonwealth of Massachusetts

KEVIN H. WHITE
SECRETARY OF THE COMMONWEALTH

Nº 62687

DIVISION OF VITAL STATISTICS

COPY OF RECORD OF MARRIAGE

I, the undersigned, hereby certify that I am the Secretary of the Commonwealth of Massachusetts; that as such I have custody of the records of marriages required by law to be kept in my office; that among such records is one relating to the marriage of

THOMAS W. MITCHELL and MARY H. FAUNCE

and that the following is a true copy of so much of said record as relates to said marriage, namely:—

Place of Marriage <u>KINGSTON, MASS.</u>	
Date of Marriage <u>DECEMBER 19 1864</u>	
GROOM	BRIDE
Name <u>THOMAS W. MITCHELL</u>	Name <u>MARY H. FAUNCE</u>
Age <u>30 YEARS</u> Color <u>—</u>	Age <u>28 YEARS</u> Color <u>—</u>
Residence <u>BURLINGAME KAN.</u>	Residence <u>KINGSTON, MASS.</u>
Number of Marriage <u>FIRST</u> Single, wid., or divorced <u>SINGLE</u>	Number of Marriage <u>FIRST</u> Single, wid., or divorced <u>SINGLE</u>
Occupation <u>FARMER</u>	Occupation <u>—</u>
Birthplace <u>MILB. MS.</u>	Birthplace <u>KINGSTON MASS.</u>
Name of Father <u>ISABROD W. MITCHELL</u>	Name of Father <u>NATH + MARC FAUNCE</u>
Maiden Name of Mother <u>MARY L. —</u>	Maiden Name of Mother <u>MARCIA F —</u>
Name and official station of person by whom married: <u>JOSEPH PELKHAM MINISTER</u>	
Date of Record <u>1864</u>	

And I do hereby certify that the foregoing is a true copy from said records.
WITNESS my hand and the GREAT SEAL OF THE COMMONWEALTH at Boston
on this 17th day of NOVEMBER 19 64

Kevin H. White

KEVIN H. WHITE
Secretary of the Commonwealth



FEE \$1.00

Year 1864
Vol. 172
Page 204
No. 12

Thomas W. Mitchell and Mary H. Faunce "Copy of Record of Marriage. The Commonwealth of Massachusetts; December 19, 1864. Thomas (age 30) resided in Burlingame). Mary (age 28) was from Kingston, Massachusetts. ³³

³³ Accessed on ancestryinstitution.com at: <https://www.ancestryinstitution.com/mediaui-viewer/tree/48373823/person/20103778555/media/987497bb-b957-415e-8a0a-cabc39822766>

NAME OF SOLDIER:		Mitchell, Thomas W. (2-H-3)		
NAME OF DEPENDENT:		Widow, Mitchell, Mary H. Minor,		
SERVICE:		E 3 Kans, Cav. D. 5 Kans, Cav.		
DATE OF FILING.	CLASS.	APPLICATION NO.	CERTIFICATE NO.	STATE FROM WHICH FILED.
1892 June 24	Invalid,	1118.449	932.664.	Kans
1915 Nov. 19.	Widow, Minor,	1056,020	801,993.	Kansas
ATTORNEY:		Claimant.		
REMARKS:		112		

Record of military pension

Mitchell, Thomas W. military pension: June 24, 1892

Mitchell, Mary H. widow: November 19, 1915 ³⁴

The following three pages are an autobiography of Neil Thomas Mitchell (son of Thomas W. Mitchell) written for Neil's great-grand daughter Penny dated April 2, 1957 at Burlingame, Kansas. In his autobiography Neil describes growing up in rural Osage Co. KS with his parents. In his preface to his autobiography, Neil comments:

"My Dear Little Penny: - I am highly flattered that you chose me for this honor. Your faith in me merits an effort on my part. Remember my spelling, punctuation, diction, grammar, and composition leans rather heavily on an unfinished High School education. Instead of an Autobiography, this might better be called a summation of the highlights of an uneventful life..." ³⁵

[See following three pages.]

³⁴ Accessed on ancestryinstitution.com at: <https://www.ancestryinstitution.com/mediaui-viewer/tree/48373823/person/20103778555/media/987497bb-b957-415e-8a0a-cabc39822766>

³⁵ Accessed on ancestryinstitution.com at: <https://www.ancestryinstitution.com/mediaui-viewer/tree/49174847/person/20192143752/media/e5f42c76-d1af-426f-9112-5b492be90524> 12/04/2018.

Burlingame, Kansas
April 2, 1957

PREFACE

My Dear Little Penny: -

I am highly flattered that you chose me for this honor. Your faith in me merits an effort on my part. Remember that my spelling, punctuation, diction, grammar, and composition learn rather heavily on an unfinished High School education. Instead of an Autobiography, this might better be called a summation of the highlights of an uneventful life.

AUTOBIOGRAPHY

I was born March 2, 1871 of New England parents in a deserted hotel on the deserted townsite of Superior, 2 miles south of Burlingame. I was the 4th of 7 children, 6 boys and a girl. My parents arrived in Burlingame in April, 1865 and took up residence in a house that Father built before the war. In this house (still being occupied) was born the two elder children and in 1869, they moved to this farm where 5 boys were born and raised. The aforesaid 5 boys are still living, all being past 80 years old.

A shadow of a memory goes back to 1875, the grasshopper year, when the grasshoppers were so thick they obscured the sun. In the fall we all had typhoid fever, dangerous in those days, but now almost unknown. I remember a box filled with handsewn clothing that was sent out from the east to alleviate the suffering of the poor and afflicted.

Within my memory the mode of transportation has gone from oxen at 2 miles per hour to supersonic speed in the air.

Our mode of travel was limited to horses and wagons and this country being a country of magnificent distances, we seldom got away from home. However, by some alchemy of fate, I was chosen out of the brood of 7 to accompany mother, father, and cousin Emma from Massachusetts, on an extended visit that took us out of the county. We borrowed a team and pitched a farm team to a springwagon and got as far as Lawrence the first day. Camped on Massachusetts street, extreme south end. Went to the Bismarck fair on the north side of the river and visited Snow Hall and camped in the same place that night.

The next day we drove to Topeka and camped. Visited the State House and asylum and returned to the humdrum life on the farm. This happened September 1882.

Our clothes were made by mother and consisted for boys of heavy leather boots, knee pants held up by a waist until about 12 or 13 years of age we were promoted to long pants held by suspenders. A time to remember vividly. I remember the assassination of Garfield which happened July 2, 1881 and he died September 19, 1881.

Before barbed wire got into common use, our cattle, about 50 head, ran on the open range and it was the job of one of us to go to the range about 2 miles south and "cut out" the milk cows and bring them home to be milked and drive them back in the morning before breakfast. Riding the range without saddle, hunting strays, and finding out where the wild strawberries grew and where the plum thickets were located is more thrilling in retrospect. And talking about thrills, there is nothing that can duplicate the thrill that came in the spring when we got to shed our heavy boots and go barefoot. And in the fall when frost was on the ground, it was at least comforting to arouse a contented cow from her place on the ground and warm our feet on the warmed earth.

There were a few bright spots in the year to look forward to as the years passed by. One was July 4 with a picnic in the woods near by and the county fair in September where we could get a family season ticket for \$1.50, and I recall one year we couldn't dig up the \$1.50. And Christmas was generally celebrated at the school house with a programme put on by the pupils.

The fall of 1877 we moved out of the old Hotel to a new house nearer the road. The hotel was converted into a Barn and was rebuilt in 1926 and the house burned on January 21, 1930. About 1883 the country adopted standard time.

Prior to that time, we had Railroad time and Sun time, which sometimes became confusing. Our fuel consisted of coal or wood. Our lights was in a transition stage from candles to coal oil lamps. Rural telephones and rural mail delivery arrived at the turn of the century.

The year 1887 was extremely dry and the corn was in August, one month early. That fact or something equally as significant, prompted Father to send three of us boys to High School. About this time the school authorities were working on a system of grading. We were aged 14-16-18 and we took studies in what was called at that time grade 9 and 10. The first graduation class was the class of 1887, 5 girls.

It was like going out into a new world. The pupils were all strangers, the studies were strange, and the aforesaid 3 boys were as green as you could scare up anywhere in the country. The class of 88 was 2 girls. We managed to eke out a paucity of knowledge in Algebra, Geometry, Philosophy, Grammar, Rhetoric, Deviltry and Discipline. Come March 1, 1889 with Spring just around the corner and the need of help on the farm, I bid farewell to school. The next five years the farm work was interspersed with baseball in the summer and singing school and literary in the winter, plus dancing.

September 16, 1893, I made an abortive effort to become a pioneer by making the race in the Cherokee Strip. On January 20, 1894 I bargained to buy a farm near Olivet about 25 miles south and on March 14 was married and took our honeymoon trip with a wagon and mule team.

The first year of our marriage was extremely dry but the arrival of our first born balanced the good with the bad. In order to notify the doctor I had to get astride a mule and ride 3 miles to a railroad station and send a telegram to the doctor in Melvina 7 miles away, and the doctor had to hire a livery rig and drive 7 miles. The doctor's fee was \$12.00 and I never knew how the \$12.00 was allocated between the doctor and the livery stable but it took 100 bushels of corn if I had raised it or an unlimited number of eggs at 5¢ per doz. In those days, hogs had to more than grow before they were worth hunting if they got out.

After 4 years of that kind of prosperity, we gave up farming and put in about 12 years of precarious living on wages and finally got an opportunity to go back to farming, the job I knew how to do and liked.

In 1913, we settled on the home farm and in 1919 we bargained to buy the south ½ of the farm where we have lived since. Intermixed with farming I put in one year on the school board, 2 years as township clerk, 4 years as township trustee, 4 years as county treasurer, 5 years on the draft board, 4 years on Federal Farm loan board, 2 years as Deputy Assessor, and finally at the age of 80, being a horse farmer, was unable to compete with modern farming, retired and the last 6 years has proved that if live begins at 40, the monotony of life begins at 80.

Your Great Grandfather

s/Neil Thomas Mitchell

Appendix “D” - Photograph log:

Building; photograph number page:

- Mitchell, Thomas W., House ca. 1861. (KHRI: 139-365) Burlingame, Osage Co. KS.

001: pg. 13

002: pg. 13

003: pg. 14

- Big John Farm Limestone Bank Barn ca. 1871 (KHRI: 127-0000-00040) Council Grove vicinity, Morris Co. KS.

001: pg. 15

002: pg. 15

003: pg. 16

004: pg. 16

005: pg. 17

006: pg. 17

007: pg. 18

- Fort Dodge: Junior Officers’ Quarters ca. 1870 (KHRI 057-1426) Fort Dodge, Ford Co. KS.

001: pg. 19

002: pg. 19

003: pg. 20

004: pg. 20

005: pg. 21

006: pg. 21

007: pg. 22

008: pg. 22

- Fort Dodge: Officers House ca. 1867 (KHRI 057-1821-00005) Fort Dodge, Ford Co. KS.

001: pg. 23

002: pg. 24

003: pg. 24

004: pg. 25

- Fort Dodge: Army Quartermaster Building ca. 1867 (KHRI 057-1399) Fort Dodge, Ford Co. KS.

001: pg. 25

002: pg. 26

003: pg. 26

004: pg. 27

- Fort Dodge: Enlisted Men's Barracks ca. 1867 (KHRI 057-1821-00003)

001: pg. 27
 002: pg. 28
 003: pg. 28
 004: pg. 29
 005: pg. 29
 006: pg. 30

- Fort Dodge: Old Fort Dodge Hospital ca. 1867 (KHRI 1821-1821-00004) Fort Dodge, Ford Co. KS

001: pg. 30
 002: pg. 31
 003: pg. 32
 004: pg. 32

Building: KHRI #/county; page

- Grinter Place	209-2820-00091	Wyandotte Co.	pg. 36
- Shawnee Methodist Mission – East Bldg.	091-1770-00003	Johnson Co.	"
- Shawnee Methodist North Building	091-1770-00004	Johnson Co.	"
- Shawnee Methodist West Building	091-1770-00005	Johnson Co.	"
- Mahaffie, J.B., House	091-0000-00005	Johnson Co.	pg. 37
- Mahaffie, J.B., Ice House	091-3777	Johnson Co.	"
- Lanesfield School	091-0000-00009	Johnson Co.	"
- McCarthy, John, House	091-1480-00004	Johnson Co.	"
- Reeder, Governor Andrew H., House	091-5090-00008	Johnson Co.	pg. 38
- Legler, Adam, Barn (Relocated)	091-3766	Johnson Co.	"
- Baker University: Old Castle Hall	045-0340-00001	Douglas Co.	"
- Palmyra Post Office (Relocated)	045-0340-00004	Douglas Co.	"
- Tucker, Dexter, House	045-0000-00289	Douglas Co.	pg. 39
- Prairie City Catholic Mission (Ruins)	045-0000-00362	Douglas Co.	"
- Prairie City Pastoral Residence (Ruins)	045-0000-00003	Douglas Co.	"
- Meunier (Miller), George, House	045-0000-00365	Douglas Co.	"
- Meunier (Miller), George, Barn	045-0000-00367	Douglas Co.	pg. 40
- Simmons Point (Ruins)	045-0000-00015	Douglas Co.	"
- Hayden, William B., House	045-0340-00005	Douglas Co.	"
- Ebright, Homer, House	045-0340-00006	Douglas Co.	"

- Cradit, N. C., House	045-0000-00369	Douglas Co.	pg. 41
- Atchison, Simon, House	139-335	Osage Co.	"
- Atchison, Simon, House: Outbuilding	139-335	Osage Co.	"
- Schuyler, Philip C., House	139-332	Osage Co.	"
- Murphy, William, House	139-333	Osage Co.	pg. 42
- Mitchell, Thomas W., House	139-365	Osage Co.	"
- Havana Stage Station Site	139-0690-00002	Osage Co.	"
- Hebrank, Frederick S., House	127-1180-00078	Morris Co.	"
- Simcock, Goodson, M., House	127-1180-00078	Morris Co.	pg. 43
- Hays, Seth, House	127-1180-00031	Morris Co.	"
- Residence [421 N Mission]	127-582	Morris Co.	"
- Mather, Jedediah Peck, House	127-1180-00053	Morris Co.	"
- Kaw Methodist Mission	127-1180-00002	Morris Co.	pg. 44
- Residence [317 Kaw]	127-584	Morris Co.	"
- Woodworth, Dr. Abner, House	127-584	Morris Co.	"
- Rawlinson, Abraham and Mary, House	127-1180-00067	Morris Co.	"
- Last Chance Store	127-1180-00004	Morris Co.	pg. 45
- Residence [204 W Hays]	127-643	Morris Co.	"
- Strieby, C. H. & Caroline, House	127-1180-00064	Morris Co.	"
- Strieby-Amrine House	027-1180-00041	Morris Co.	"
- Hughes, Callie & Armstrong, Mollie, House	127-1180-00066	Morris Co.	pg. 46
- Bradford, Dr. James H., House	127-0000-00079	Morris Co.	"
- Miller & Kerr Building	127-526	Morris Co.	"
- Hays Tavern	127-1180-00003	Morris Co.	"
- Commercial Building [119 W Main]	127-1180-00016	Morris Co.	pg. 47
- Conn Store	127-1180-00069	Morris Co.	"
- T. S. Huffaker & Co. Building	127-14180-00076	Morris Co.	"
- Big John Farm Livestock Bank Barn	127-0000-00040	Morris Co.	"
- Six-Mile Creek Stage Station	127-0674-00006	Morris Co.	pg. 48
- Six-Mile Creek Stage Station: Barn	127-0674-00006	Morris Co.	"
- Fort Larned: Blockhouse	145-126	Pawnee Co.	"
- Fort Larned: Infantry Barracks	145-117	Pawnee Co.	"

- Fort Larned: Barracks	145-118	Pawnee Co.	pg. 49
- Fort Larned: Shops Building	145-119	Pawnee Co.	"
- Fort Larned: New Commissary Storehouse	145-120	Pawnee Co.	"
- Fort Larned: Old Commissary Storehouse	145-121	Pawnee Co.	"
- Fort Larned: Quartermaster Storehouse	145-122	Pawnee Co.	pg. 50
- Fort Larned: Officers' Quarters	145-123	Pawnee Co.	"
- Fort Larned: Commanding Officer's Quarters	145-124	Pawnee Co.	"
- Fort Larned: Officers' Quarters	145-125	Pawnee Co.	"
- Hill Crest House	145-135	Pawnee Co.	pg. 51
- Hillcrest Barn	145-136	Pawnee Co.	"
- Buhrer, J. W., Farmstead	145-128	Pawnee Co.	"
- Fort Dodge: Commanding Officer's Quarters	057-1821-00002	Ford Co.	"
- Fort Dodge: Enlisted Men's Barracks	057-1821-00003	Ford Co.	pg. 52
- Fort Dodge: Officers House	057-1821-00005	Ford Co.	"
- Fort Dodge: Old Fort Dodge Hospital	057-1821-00004	Ford Co.	"
- Fort Dodge: Army Quartermaster Building	057-1399	Ford Co.	"
- Fort Dodge: Junior Officers' Quarters	057-1426	Ford Co.	pg. 53
- Fort Dodge: Dead House [Relocated]	057-1427	Ford Co.	"